

Agenda item 6.7(a)

Council

CNL(00)49

***Special Liaison Meeting to Review Measures to
Minimise Impacts of Aquaculture on Wild Stocks***

Presentation by the European Union (Ireland)

***Mr Maurice Mullen, Department of the Marine and Natural Resources and
Dr Ken Whelan, Marine Institute***

Aquaculture in Ireland



Maurice Mullen, Department of the
Marine and Natural Resources

Dr Ken Whelan, Marine Institute

02/06/00

1

PRESENTATION FORMAT

- 1. FRAMEWORK
-
- 2. TECHNICAL ASSESSMENT
-
- 3. POTENTIAL IMPACTS
-
- 4. FUTURE STRATEGY

02/06/00

2

DEPARTMENT OF THE MARINE AND NATURAL RESOURCES

- Corporate governance of Fisheries Boards, Marine Institute and BIM
- Setting policy objectives and frameworks for fisheries, including inland fisheries and aquaculture
- Licensing and monitoring aquaculture operations
- Overseeing implementation of EU health regime

02/06/00

3

Salmon Aquaculture in Ireland



02/06/00

4

STRUCTURES

- Department of the Marine and Natural Resources
- Fisheries Boards
- Marine Institute
- Bord Iascaigh Mhara (BIM) and Údarás na Gaeltachta

02/06/00

5

FISHERIES BOARDS



-
-
-
- 7 Regional Fisheries Boards (RFBs) responsible for management and development of fisheries. Boards mainly public funded
- Central Board provides specialist services and co-ordinates RFBs
- New RFB Board structures in place - includes fisheries, tourism, environmental, local development and aquaculture interests

02/06/00

6

AQUACULTURE LICENCE APPEALS BOARD

- Aquaculture Licence Appeals Board (ALAB):
- Independent / Chaired by a Senior Counsel
- Members appointed from nominating bodies, including:
 - Aquaculture
 - Wild fisheries
 - Physical planning / development
 - Environment and amenities
 - Community
- Reviews applications "de novo"
- Rights and procedures set out in Act



02/06/00

13

Management Team



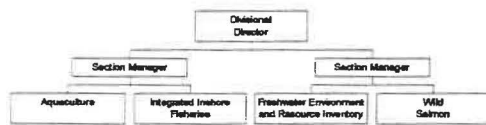
02/06/00

14

Divisional Structure



Salmon Management Services



Aquaculture Monitoring in Ireland



Programme	Agency / Institution	Personnel	Annual Cost (Year 2000)
Sea-lice Monitoring	Marine Institute	5	£200,000
Benthic Monitoring	Marine Institute	1	£ 40,000
Engineering Surveys	Department of Marine	6	£ 12,000
Fish Health Monitoring	Marine Institute	5	£250,000
Residue Testing	Marine Institute	6	£210,000
Wild Salmon/ Escapes	Marine Institute	12	£180,000
		Total	£892,000

02/06/00

16

EIS



- EIS all operations over 100 tonnes
 - Address issues of: location, dimensions, site characteristics, marine environment – water, biota etc
 - Full details of production process, any potential impacts
 - Detailed description of proposed monitoring activities
 - Baseline monitoring carried out in support of the application
 - List of individuals, organisations consulted and issues raised
 - Any difficulties in the completion of the EIS must be reported.

02/06/00

17

MONITORING PROTOCOLS

- 1. Benthic
- 2. Water Quality
- 3. Sea Lice
- 4. Fallowing
- 5. Visual Amenities

02/06/00

18

Effective Fallowing

- Separation between generations
- Appropriate fallow period
 - 1 Month
- Synchronous fallowing of sites
 - adjacent sites fallow at same time
 - SBM agreement

02/06/00

31

Strengths of Approach

-
- Very effective in breaking cycle of infection
- Implementation is well advanced
- No extra production sites required
 - fallowing or smolt sites only required

02/06/00

32

ESCAPEES

- Ireland - large number of small salmon
- Moy - 120,000 coast, 40,000 to 50,000 spawners
- Salmon tag recovery programme - 48% catch
- Overall 1% or less of catch - 2t - 2.5t
- Strong cages, function of location - exposed west coast

02/06/00

33

SEA TROUT

- ~~Decline 1980s~~ Habitat & poaching
- Collapse 1989 mid-west
- Broad range of research areas: environment, predation, disease, physiology and sea lice
- Intensive research: disease, physiology, environment, sea lice
- Most interest has centred on sea lice research - difficult
- Now evidence Norway, Scotland, Ireland, high or low juvenile lice numbers near farms, high chaimus levels always recorded near farms. Contribution from farms complex and variable
- Some fisheries stocks very low, others some evidence of recovery
- Sea Trout Task Force (1995) - all parties involved
- Farms adjacent to wild salmonid fisheries, managed on a precautionary basis

02/06/00

34

SEA TROUT (Cont.)

- Major sea trout review completed
- Management protocols, recovery targets
- Focused research & monitoring programme
- CLAMS type initiative - commit to conservation and rehabilitation of wild salmonid stocks

02/06/00

35

FUTURE DIRECTIONS

- Strategic study to be published - 8th June
- Need to expand the industry:
 - achieve critical mass
 - support coastal jobs
 - sustainable / quality / innovation
 - priority - wild salmonids
 - develop real cooperative processes

02/06/00

36

INTEGRATED RESOURCE MANAGEMENT

- Co-ordinated Local Aquaculture Management Systems (CLAMS)
- Nationally driven / locally implemented
- CLAMS developed from SBM - half way house
- Integration with new CZM arrangements:

CLAMS

Inshore Fisheries Management

02/06/00

37

CROSS BODY REPRESENTATION

-
-
- National Salmon Commission
- Fisheries Boards
- Aquaculture Licence Advisory Committee
- Aquaculture Licence Appeals Board

02/06/00

38