

Report of the 7th Meeting of the International Atlantic Salmon Research Board

Ken Whelan
Chairman IASRB



IASRB 7th Meeting

- Excellent Progress in implementing
SALSEA

Inventory

- Overview
- Includes 3 large projects:
 - SALSEA Merge,
 - SALSEA North America,
 - SALSEA West Greenland
- Expenditure 07 - £6.7m, > 32%

IASRB 7th Meeting

SAG

- Sub-Group - Inventory Review
- The IASRB agreed:
 - Tagging data
 - Steering Committee – The Salmon Summit
 - Trophic levels of salmon (£20k)
 - 2 scientists to participate in ICES Study Group

Proposals for funding – 31st July

West Greenland Sampling

The SALSEA Marine Programme

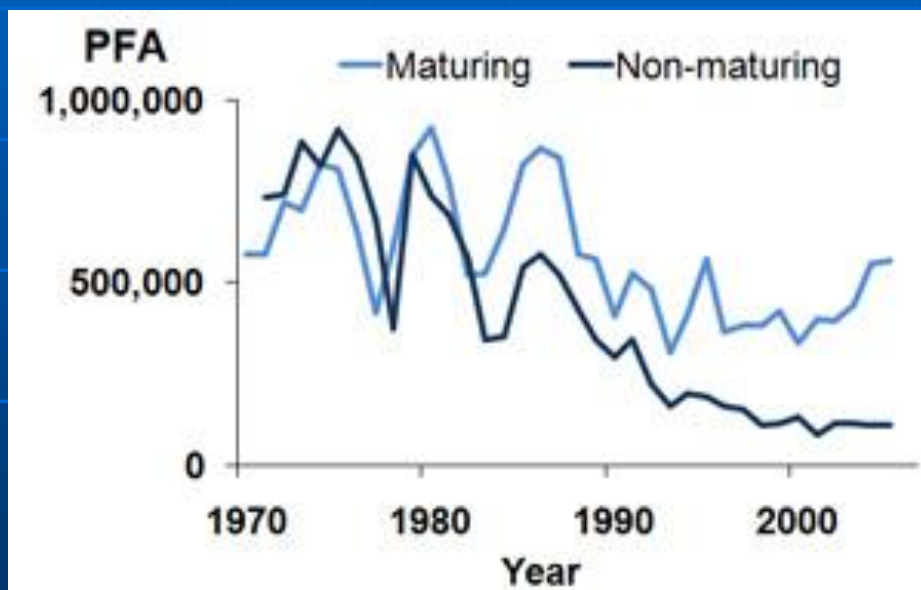
- SALSEA Merge
- SALSEA North America
- SALSEA West Greenland



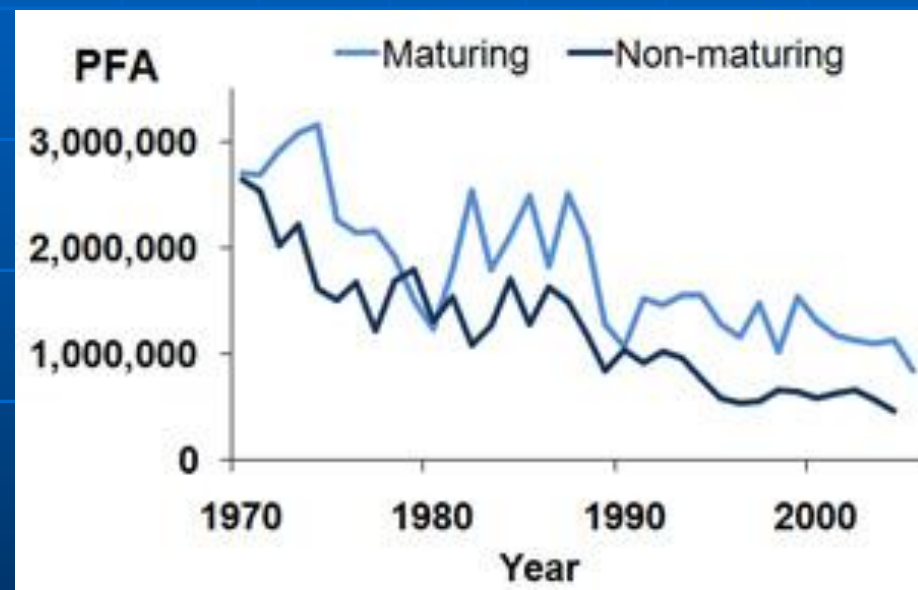
WILD ATLANTIC SALMON Post Smolts

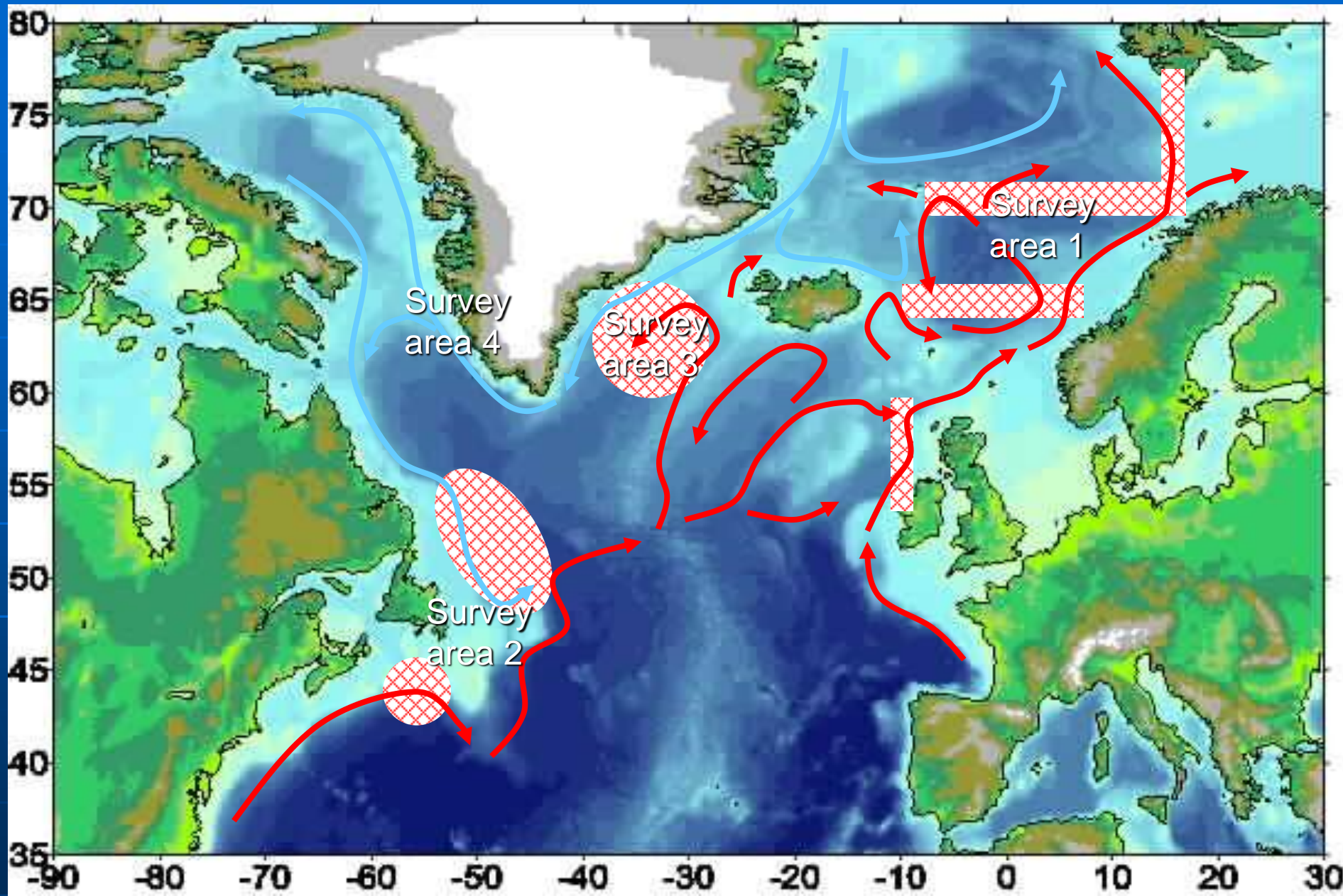
Pre-fishery Abundance Trends

North American stocks



Southern European stocks





SALSEA Merge

- SALSEA-Merge is a consortium of 20 public and private partners, from 9 EU nations, which were successful in applying for support funding under the EU 7th Framework programme.
- Together with funding from the private sector and the institutes involved SALSEA-Merge is now a €5+m project lasting three years (1/4/2008- 1/4/2011)



SALSEA Merge

- SALSEA-Merge has three major:
 - A. Seagoing sampling and analysis of data acquired
 - B. Genetically assignment of geographic origin to stock or region of single individuals caught over large oceanic areas
 - C. Merging of results from A and B plus large historic data set, into an analysis of stock specific migrations and relations with oceanographic and ecologic features

Status of SALSEA-Merge

- The project started April 1st 2008 although there has been activities since february 2008
- Held three major meetings this spring:
 - Symposium/Workshop on genetics, Paris, February
 - Planning meeting on seagoing activities in Copenhagen, February
 - Project meeting and launch , Sligo, Ireland, May















SALSEA-Merge ongoing activities

■ Seagoing

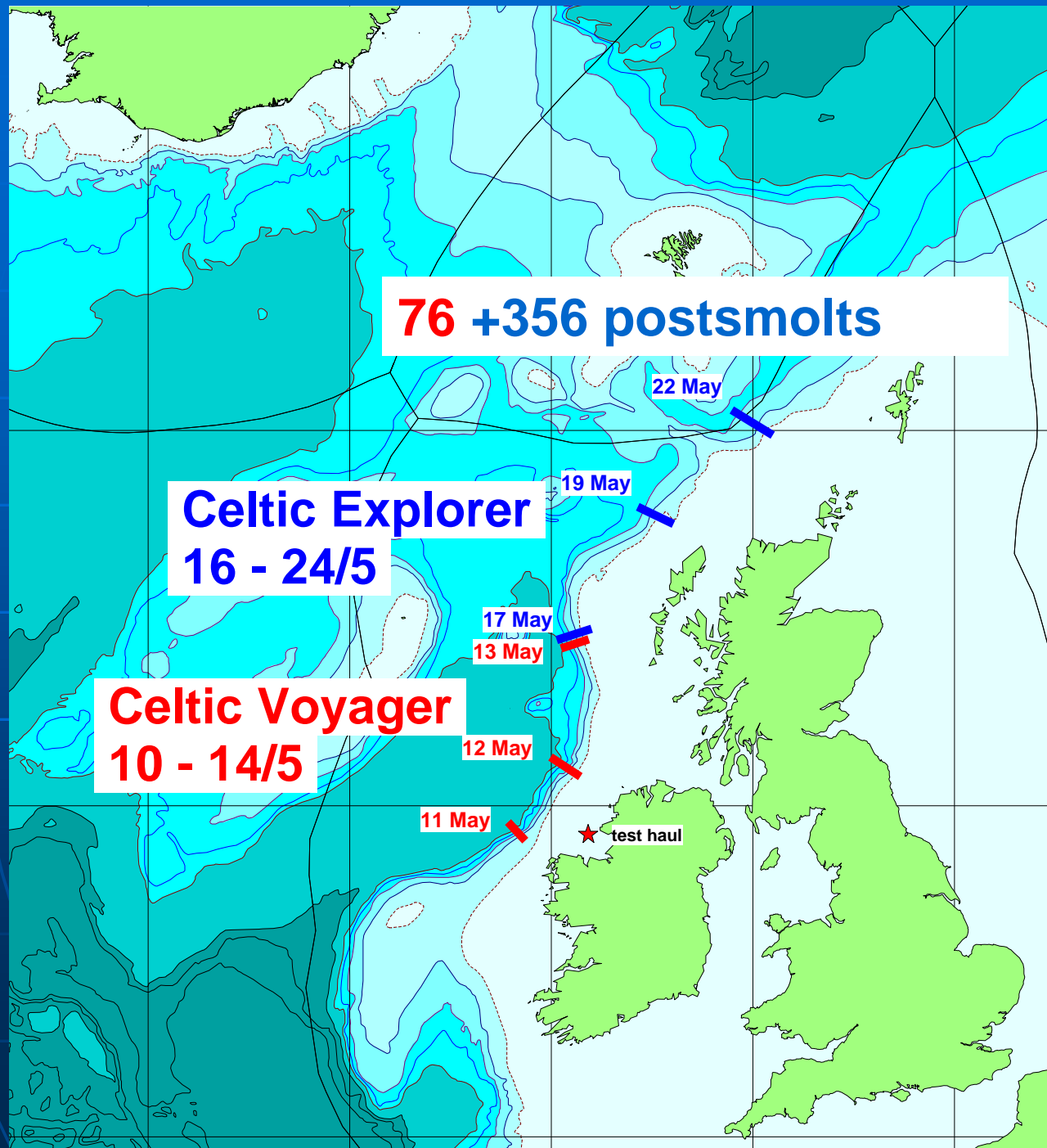
- Two Irish surveys successfully finished by Celtic Voyager and Celtic Explorer in May
- Covered the shelf edge area from northwestern Ireland to Wyville Thompson ridge
- Caught 76 and 356 postsmolt salmon and did extensive oceanographic and plankton sampling in the same area





TRAWL 21
23/5/2008.





SALSEA-Merge near future

- Faroese and Norwegian surveys planned for July-August
 - Faroese survey will cover western edge of Voring plateau (another high density area)
 - Norwegian survey will cover:
 - 1: Areas east (Barents Sea) and west of Svalbard (Norwegian Sea) (mainly older fish+video trawl)
 - 2: Svalbard to Norwegian coast

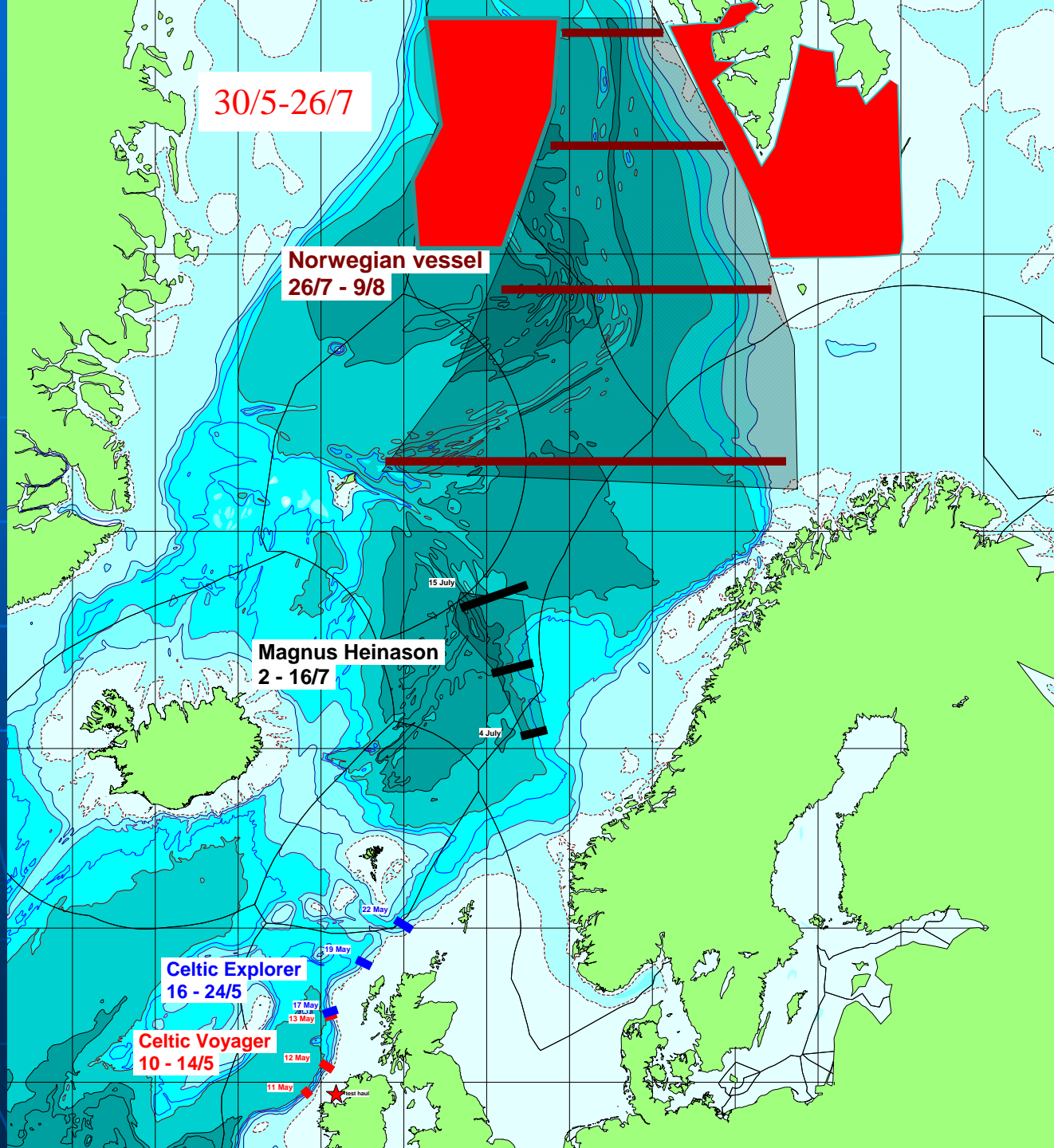
30/5-26/7

Norwegian vessel
26/7 - 9/8

Magnus Heinason
2 - 16/7

Celtic Explorer
16 - 24/5

Celtic Voyager
10 - 14/5



SALSEA North America

Research strategy consists of three inter-related activities which build on existing index rivers programs in eastern North America

Life History Monitoring:

- Data on life history parameters.
- Index rivers monitoring program
- Sampling at West Greenland

Electronic technologies:

- Acoustic tracking work led by the Atlantic Salmon Federation

Marine capture surveys:

SALSEA North America

Marine capture survey

- August 1 to 24, 2008

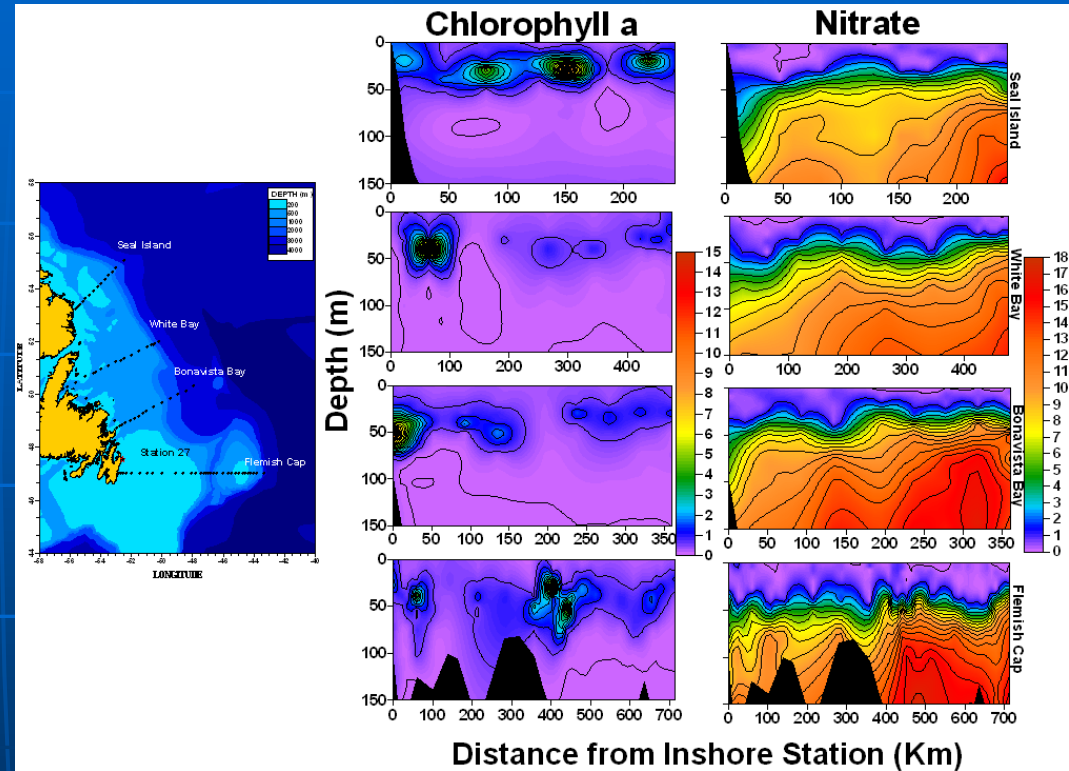
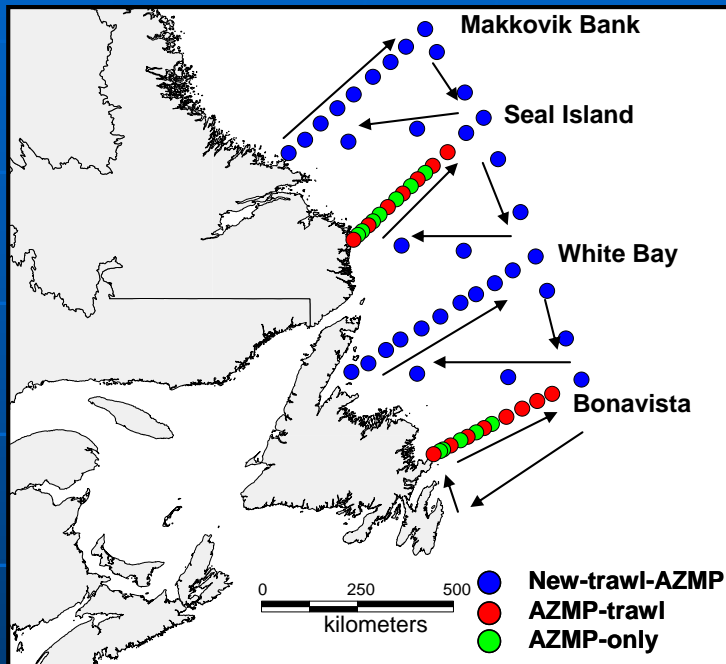
Coordination: G.
Chaput (DFO
Canada) and T.
Sheehan (US NOAA)
Science personnel: 4
from DFO Canada, 3
from US NOAA, 1
from Province of
Quebec

CCGS Wilfred Templeman



SALSEA North America

- Marine capture surveys



IASRB 7th Meeting

Coordination

- Research coordinators: JC Holst, Gerlad Chaput, Tim Sheehan
- Exchange experience
- Exchange results
- Exchange expertise / personnel

Dissemination of Results

IASRB 7th Meeting

- Finance and Administrative Matters
 - Atlantic Salmon Conservation Foundation
- Year end balance of £90k
- Chairs recommendation -£20k to support the administrative work of the IASRB