



North-East Atlantic Commission

NEA(17)6

Mixed-Stock Fisheries

(Tabled by the Russian Federation)

NEA(17)6

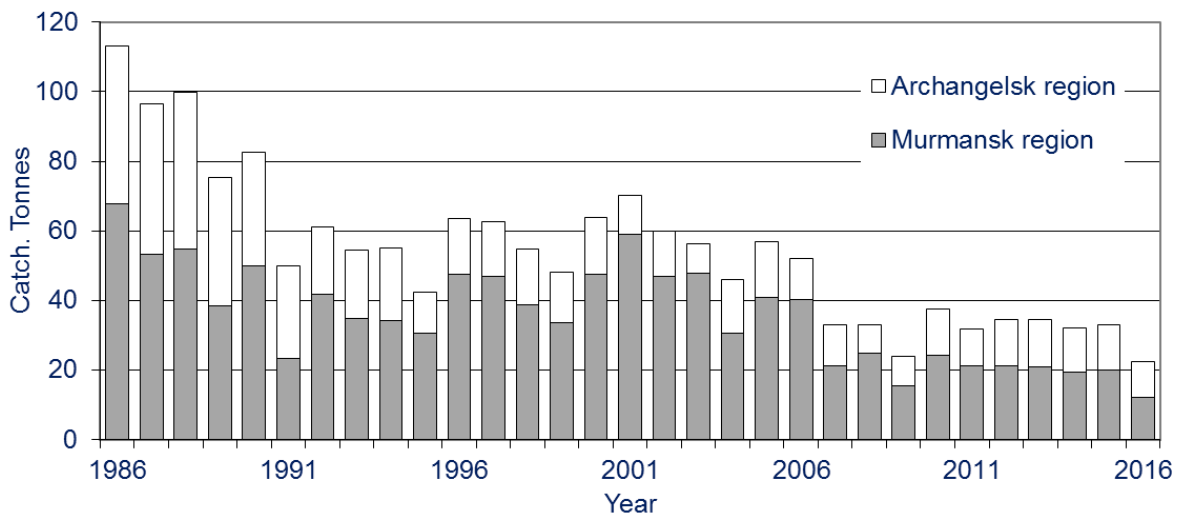
Mixed-Stock Fisheries (Tabled by the Russian Federation)

In the Russian Federation, mixed-stock salmon fisheries are conducted in the Murmansk and Archangelsk regions in the White Sea only. Coastal salmon fisheries in the Barents Sea are prohibited by the Fishing Regulations for the Northern Fisheries basin (order of the Ministry of Agriculture No. 414, 30.10.2014).

Commercial, recreational and indigenous salmon fisheries are allowed at fishing sites only. A catch limit for anadromous fish is established annually on a region-by-region basis by the Federal Agency for Fisheries. A regional catch limit is allocated to commercial, recreational and indigenous fisheries by the Regional Commissions on Regulation of Harvesting the Anadromous Fish.

A Regional Directorate of the Federal Agency for Fisheries is responsible for issuing licenses for users of fishing sites in accordance with a catch limit allocated by a Regional Commission on Regulation of Harvesting the Anadromous Fish. Users of fishing sites are obliged to report catches to a Regional Directorate of the Federal Agency for Fisheries twice a month. Once the allocated catch limit has been reached the fishery must be closed.

Over past three decades, the effort in coastal fisheries in the White Sea has been noticeably reduced. The coastal catches decreased from over 100 tonnes in the 1980s to around 50 tonnes in the 1990s. Over the past 10 years, the total declared coastal catch in the White Sea has fluctuated around 30 tonnes (see Figure below).



Commercial coastal catches of Atlantic salmon in the White Sea in 1986-2016 by region (in tonnes round fresh weight).

In 2016, the total declared commercial catch of Atlantic salmon taken in coastal areas of the White Sea was 22.5 t (see Table below), the lowest in the time series with 12.1 t reported for the Murmansk region and 10.4 t reported for the Archangelsk region.

Provisional nominal catch (which may be subject to revision) for 2016	In-river	Estuarine	Coastal	Total
	32.3	0.0	23.5	55.8
Confirmed nominal catch of salmon for 2015	46.3	0.0	33.9	80.2

Nominal catches of Atlantic salmon in Russia in 2015-2016 (in tonnes round fresh weight).

Today, the commercial coastal salmon fishery in Russia is viewed more as a social measure - a traditional way of fishing by local people from Pomor villages along the White Sea coast.

The results of the Kolarctic salmon project have shown that no adult salmon sampled in the White Sea were assigned to the rivers outside the area. Salmon caught in the White Sea originated from 25 rivers and the vast majority of the fish were from 17 rivers in the Murmansk region (Vähä *et al.*, 2014). Along the White Sea coast of the Murmansk region, 48% of sampled salmon originated from the Varzuga River and 23% of samples were assigned to the Strelna River. The occurrence of Varzuga salmon was highest (89%) in the coastal catches taken in the western part of the fishing area, closest to the Varzuga River estuary. The proportion of Varzuga salmon decreased towards the east and was lowest (27%) in the autumn catches taken in the most eastern areas. The number of salmon populations (15 stocks) was higher in catches taken in June-July than in the autumn (6 stocks) (Prusov *et al.*, 2014).

References

Prusov, S., Ustyuzhinsky, G., Wennevik, V., Vähä J.-P., Ozerov, M., Fernandez R.D., Niemelä, E., Svenning, M-A., Falkegård, M., Kalske, T., Christiansen, B., Samoylova, E., Chernov, V., Potutkin, A., Tkachenko, A. 2014. Summary results from coastal salmon fisheries in the White Sea: timing and origin of salmon catches. Kolarctic report. 38 pp.

Vähä, J.-P., Wennevik, V., Ozerov, M., Fernandez, R.D., Unneland, L., Haapanen, K., Lyzhov, I., Rysakova, K., Falkegård, M., Svenning, M-A., Prusov, S. 2014. Genetic structure of Atlantic salmon in the Barents region and genetic stock identification of coastal fishery catches from Norway and Russia. Kolarctic report. 95 pp.