



**West Greenland Commission
Inter-Sessional Meeting**

WGCIS(18)10

Inland Fisheries Ireland

Salmon Management in Ireland

WGC Intersessional Meeting

27th February 2018

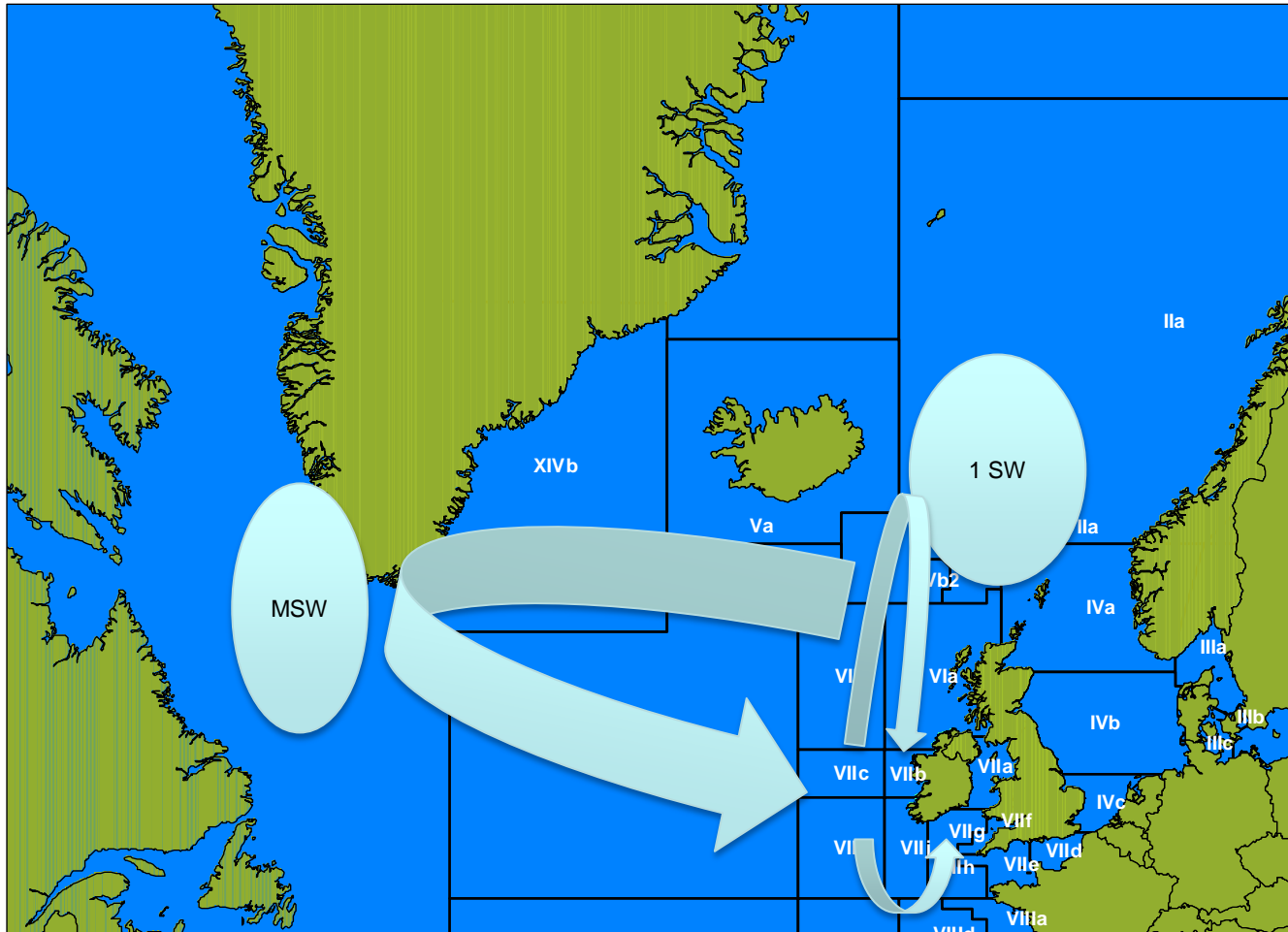
Dr. Cathal Gallagher

IFI, Head of Research and Development



Iascach Intíre Éireann
Inland Fisheries Ireland

Ireland's Salmon Stocks



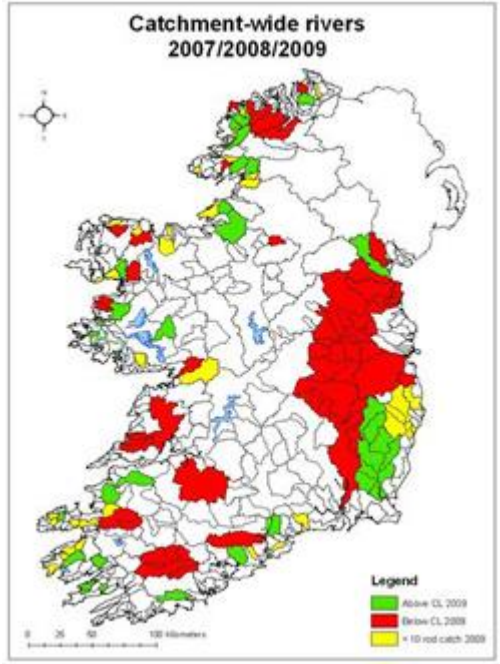
Scientific Science Advice

- Rod Catch
- Counter Data
- Juvenile Index



5 Year Historic Data

Dundalk all ages	River name	Flurry	Castletown	Fane	Glyde	Dee	Dee
	Common estuary Fisheries Board Code	DunA	DunB	DunC	DunC	DunC	Counter
	OS River Number	91	92	94	95	96	96
	Type of monitoring	Catch	Catch	Catch	Catch	Catch	Counter
Harvest / counts by year							
2003	2002	0	12	30	43	92	118
2004	2003	0	41	126	63	40	84
2005	2004	0	18	73	36	55	161
2006	2005	2	12	14	70	57	211
2007	2006	0	0	100	33	23	376
CSR							
2003	CAR 2002	0	0	3	0	0	0
2004	CAR 2003	0	9	5	7	9	0
2005	CAR 2004	0	1	3	0	0	0
2006	CAR 2005	0	1	11	1	0	0
2007	CAR 2006	0	42	40	1	0	0
Catches, corrected for released fish							
2003	2003	0	12	33	43	92	40
2004	2004	0	41	128	70	49	86
2005	2005	0	19	76	36	55	87
2006	2006	2	13	25	71	57	23
2007	2007	0	42	140	34	23	53
Exploitation rates in the rod fisheries (Crystal Ball assumptions)							
Triangular Distribution	Likely	0.05	0.15	0.15	0.15	0.15	0.26
	Minimum	0.01	0.02	0.02	0.02	0.02	0.06
	Maximum	0.12	0.35	0.35	0.35	0.44	0.44
Crystal Ball ER drivers based on assumptions above							
2003	2002	0.056	0.144	0.129	0.160	0.291	
2004	2003	0.061	0.287	0.130	0.163	0.091	
2005	2004	0.037	0.149	0.171	0.040	0.217	
2006	2005	0.076	0.181	0.128	0.166	0.253	
2007	2006	0.049	0.073	0.325	0.093	0.095	
Estimated spawners							
		Assume 33% of CL					
2003	2002	41	71	225	226	224	119
2004	2003	41	118	887	366	401	84
2005	2004	41	110	372	492	198	161
2006	2005	41	60	184	388	169	211
2007	2006	41	876	330	332	218	376
Conservation limits							
	Total CL	123	197	543	2172	2410	2410
	15W CL	114	182	502	2006	2229	2229
	25W CL	9	15	41	163	181	181
	within district	0.023	0.036	0.100	0.399	0.443	0.443
Draft / snep / other catches (by river)							
	Draft prop by river	0.00000	0.00000	0.41280	0.30815	0.14053	0.14053
	Snep prop by river	0	0	0	0	0	0
	Other prop by river	0	0	0	0	0	0
2003	2002	0	0	208	169	73	70
2004	2003	0	0	305	152	70	103
2005	2004	0	0	219	226	103	74
2006	2005	0	0	128	162	74	44
2007	2006	0	0	0	95	44	0
Driftnet catches (using river specific proportions of national catch based on CWT analysis in 148 rivers database)							
	Prop by river	0.0358	0.1843	0.3244	0.2476	0.1139	0.1139
2003	2002	16	67	145	108	49	49
2004	2003	16	67	145	108	49	49
2005	2004	16	67	145	108	49	49
2006	2005	16	67	145	108	49	49
2007	2006	16	0	0	108	49	0



Salmon Management

October

Independent
Scientific Advice

- MSW and 1 SW surplus per catchment
- Juvenile index
- Recommendations on status Open/Closed/CR

IFI Salmon Mgt

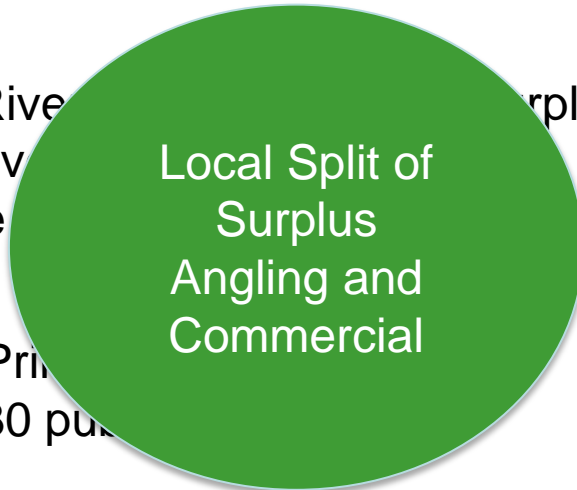
- Open River surplus per catchment
- C&R River surplus per catchment
- Licence

Draft P
AE

- Draft P
- Start 30 pu

IFI Licences
Available

- On-line & Paper licences, tags available
- Season and River information available






1st January



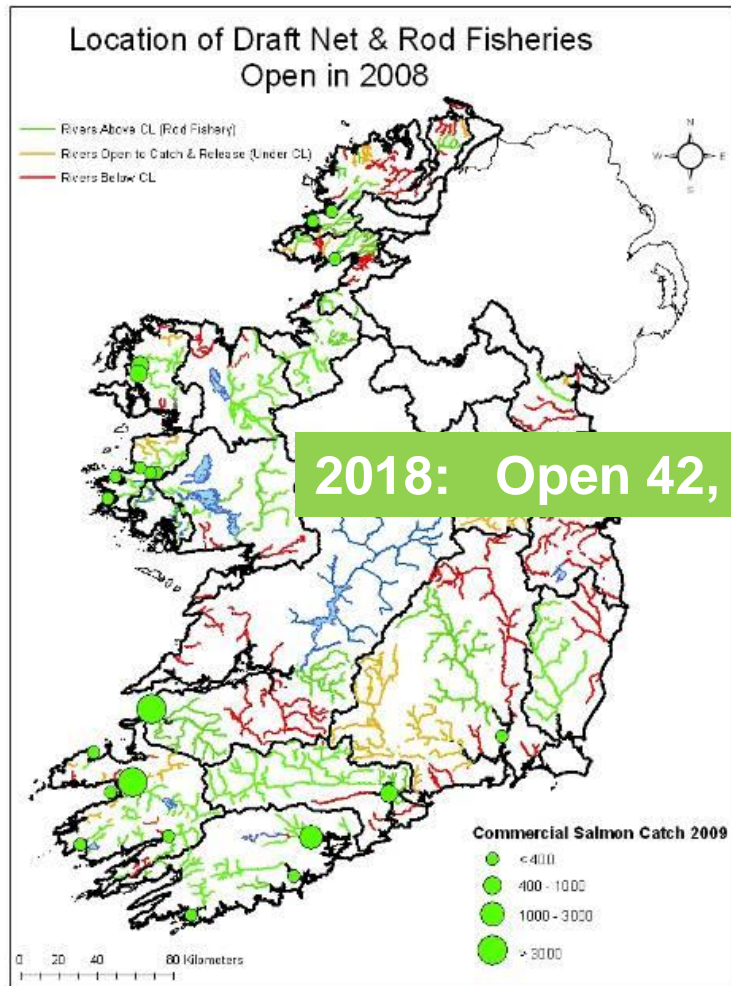
Salmon & Sea Trout Legislation

Wild Salmon and Sea Trout Tagging Scheme (Amendment) Regulations 2017

I, Sean Kyne, Minister of State at the Department of Communications, Climate Action and Environment, in exercise of the powers conferred on me by section 69 of the Inland Fisheries Act 2010 (No. 10 of 2010) and the Communications, Climate Action and Environment (Delegation of Ministerial Functions) Order 2017 (S.I. No. 314 of 2017), after consultation with Inland Fisheries Ireland, hereby make the following regulations:

Cork	Owenacurra	0		closed?
	Lower Lee	1,801		blue tag?
	Bandon	818		
	Ilen	784		
	Mealagh	191		
	Coomhola	62		brown tag?
	Upper Lee	0		
	Glengarriff	332		
	Argideen	103		

Salmon Management 2008



- 53 rivers open with surplus for exploitation
- 13 rivers with MSW surplus.
- 25 Closed.
- 20 C&R

2018: Open 42, C&R 36 & 65 Closed

average rod catch has been less than 10 salmon annually since 2001. No harvest.



Salmon & Sea Trout Licence

- Season (Jan to Sept)
 - Variations
- Total 10 tags per angler
 - 11th May (only 3 fish)
 - 12th May – 31st Aug Max (3 per day)
 - September (max 1 per day)
 - Brown Tags
- Compulsory catch reporting
- Protection (Irish history)



Salmon Licence Fees (2017)

All Districts (i.e. all Regions) Annual: €100

Juvenile (under the age of 18 years) All Districts Annual: €10

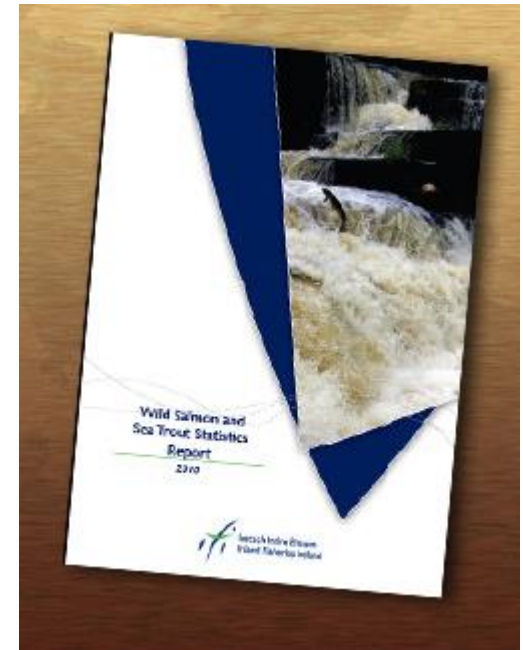
One District, Annual: €56

All districts, 21 Days: €40

All districts, 1 Day: €20

Foyle Area Extension: €80

Special local licence: €24



Inland Fisheries Ireland
Inland Fisheries Éireann

Salmon & Sea Trout Licence



3. THE TAG

The tag to be used by anglers is a blue plastic self-locking device (an additional brown tag is also required for certain rivers – refer to Table 1 – Open Fisheries 2017) to ensure angling quotas are not exceeded. Contact the relevant IFI office for details on how to obtain brown tags). Each blue tag is embossed with a code identifying where the tag was issued, the year in which the tag can be used, a security code and a tag serial number.

Anglers should carefully note the following concerning the use of these tags:

- Each rod licence holder will be issued tags for his/her use only. Tags are not transferable between licence holders.
- These tags shall not be re-used.
- One tag shall be attached to each salmon (any size) and sea trout (over 40 cm) caught and retained.
- Tags must be attached immediately on landing the fish.
- Tags shall be attached through the gill opening and mouth of the fish and securely double locked around the gill cover.
- Additional tags shall be issued on presentation of logbook information showing that the licence holder has used the gill tags issued to him or her, subject to bag limits.
- Lost and accidentally destroyed tags may be replaced upon presentation of a signed declaration completed by the angler and signed by an Authorised Officer of Inland Fisheries Ireland.
- Gill tags shall only be removed from the fish at the time of processing in accordance with the Tagging Scheme Regulations. For the purposes of this scheme processing includes: smoking, marinating or cooking the fish, gutting and freezing the fish or cutting any steaks, cutlets or portions of the fish.

4. THE LOGBOOK

On receipt of tags the angler will also receive a logbook. Details of the gill tags issued to an angler will be entered into the angler's logbook by the issuing agent.

Each angler shall:

- Have the logbook in his/her possession while fishing for salmon or sea trout.
- Record all details of their catch in their logbook immediately after tagging the fish.
- Make a catch record even if the fish is released (**including kelts and baggots**).
- Record details of any lost or damaged tags.
- Declare lost or damaged logbooks to Inland Fisheries Ireland.

5. RETURNING LOGBOOKS AND UNUSED TAGS

In accordance with the Wild Salmon and Sea Trout Tagging Regulations anglers are required by law to return their completed logbook (even if there is no catch recorded) and all unused tags to the issuing office of Inland Fisheries Ireland **by the 19th October annually**. A business reply envelope is provided for this purpose. Anglers are required to obtain proof of postage and to retain such proof for 12 months.

SALMON ROD (ANNUAL) JUVENILE LICENCE
Valid for wild Atlantic salmon (*Salmo salar*) and wild sea trout (*Salmo trutta*)

Inland Fisheries Ireland,
Teach Breac, Earl's Island, Galway

Valid to end of 2012 season in all fishery districts

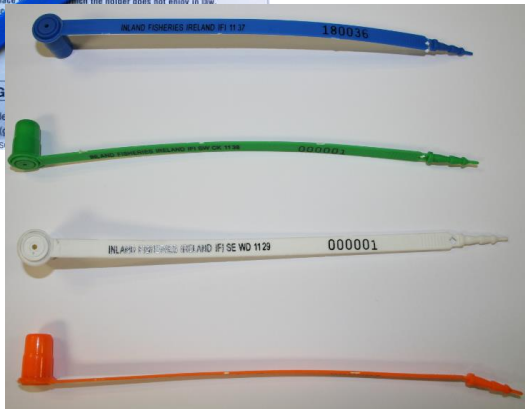
Authorised Agent: *Ernst* Agent Signature: *Mark* Issued (ddmmyyy): *08/20/11*
Licence Holder: *A. D. H. M. E.* Licence Holder's Address: *WILSON*

Licence Holder's Home Address (BLOCK LETTERS): *SOUTH AFRICA*

Email Address: _____

Duty: €10

Date Issued (dd/mm/yy)	Quantity Issued	Date Returned (dd/mm/yy)	Quantity Returned	Tag Code Numbers (and last in series)

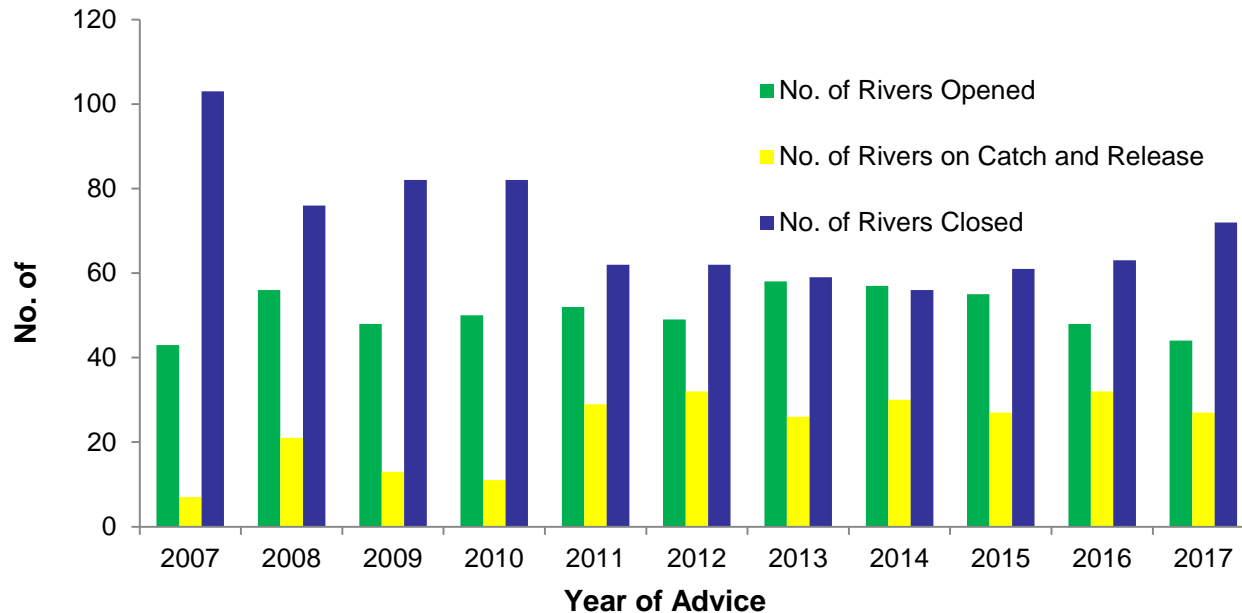


Advantages for Management

- retained non tagged wild salmon are illegal fish
 - enforcement
 - differentiate between farmed and wild salmon (restaurants and sales)
- enables management of surplus by catchment and above CL (Brown Tag)
- enables management & traceability of sales of commercial fish
- enables annual salmon advice, predictive modelling and annual mgt measures
- reporting compulsory – provides detailed statistics to sport management
- enables conservation efforts to be focused on catchments below CL
- no mixed stock fisheries on stocks above CL – increased pressure

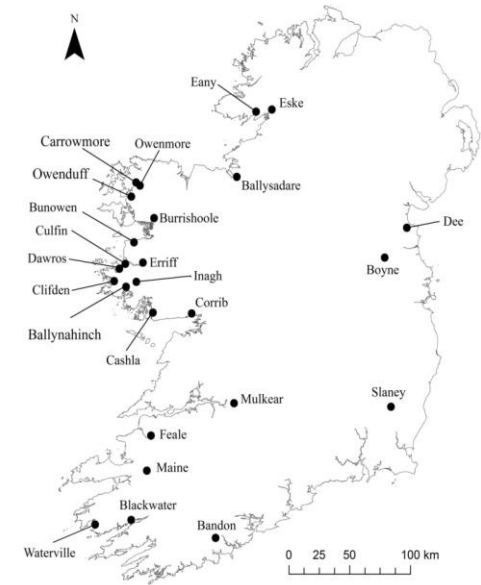
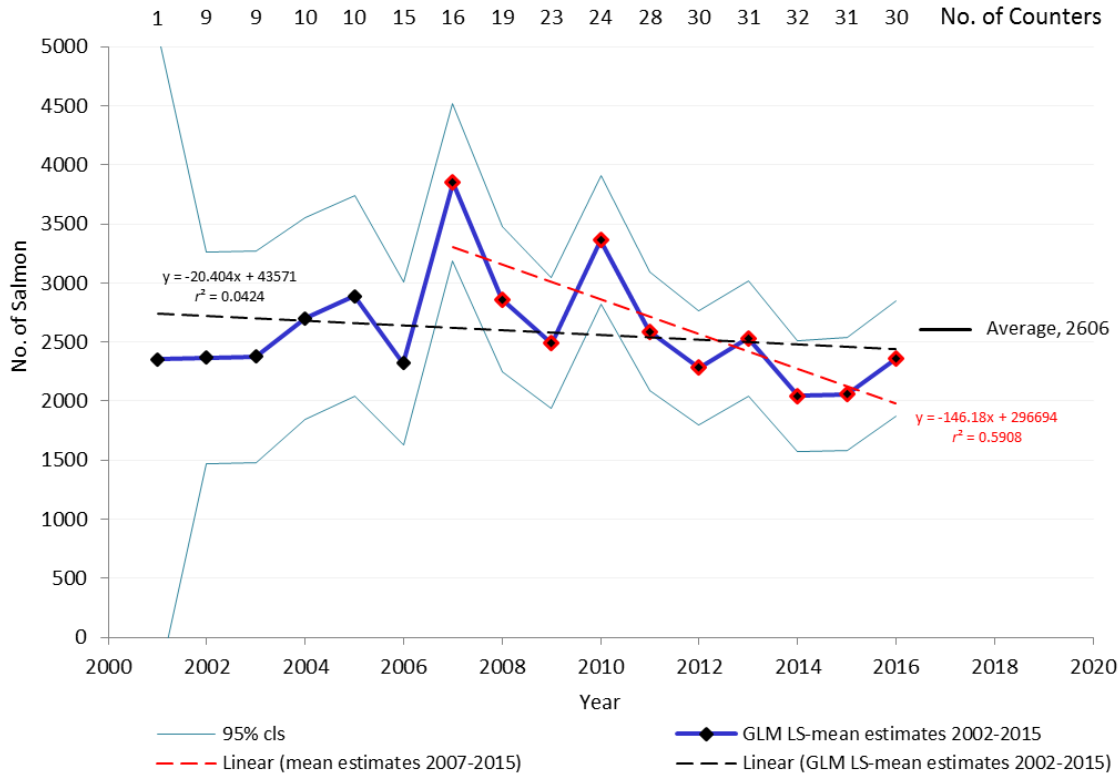


Dynamic Salmon Management



	2007	2008	2009	2010	2011	2012	2013	2014	2015
Commercial catch	8,872	8,903	6,757	14,159	11,973	10,319	14,125	9,570	7,691
Angling harvest	19,430	22,215	17,521	22,336	20,306	22,287	18,178	11,313	15,734
Angling C&R	15,113	13,563	11,422	15,142	12,688	11,891	10,682	6,537	9,383
% of angling that is C&R	43.8	37.9	39.5	40.4	38.5	34.8	37	36.6	37.4

Other data sources – counters programme





Iascach Intíre Éireann
Inland Fisheries Ireland