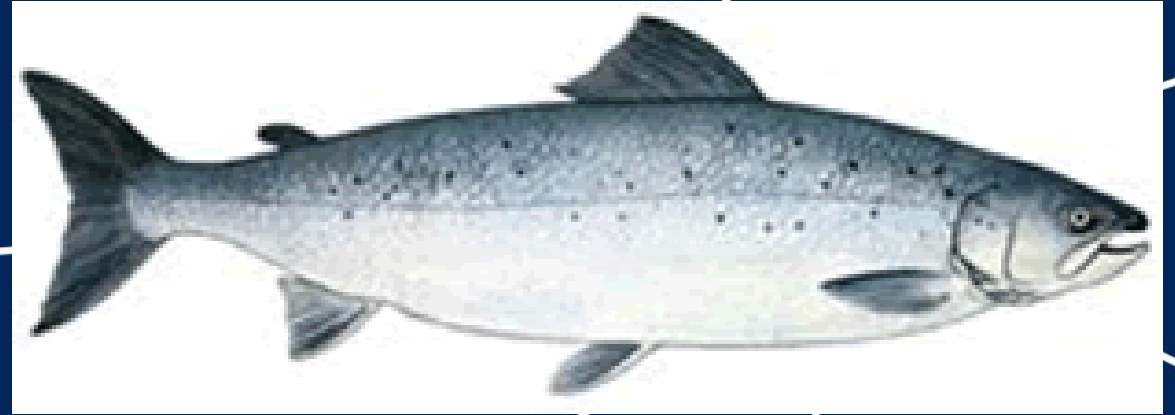


CNL(24)55

Update on the Streamlining of ICES Advice CNL(24)07

NASCO June 2024
Joanne Morgan
ICES ACOM Vice Chair



Science for sustainable seas

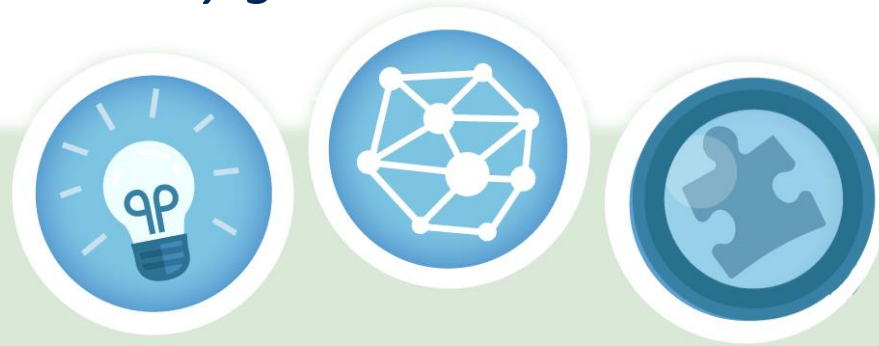
Contents



- *Overview of ICES advice and its production*
- *Changes to ICES guidelines*
- *Update on subgroup on advice format*

ICES advice

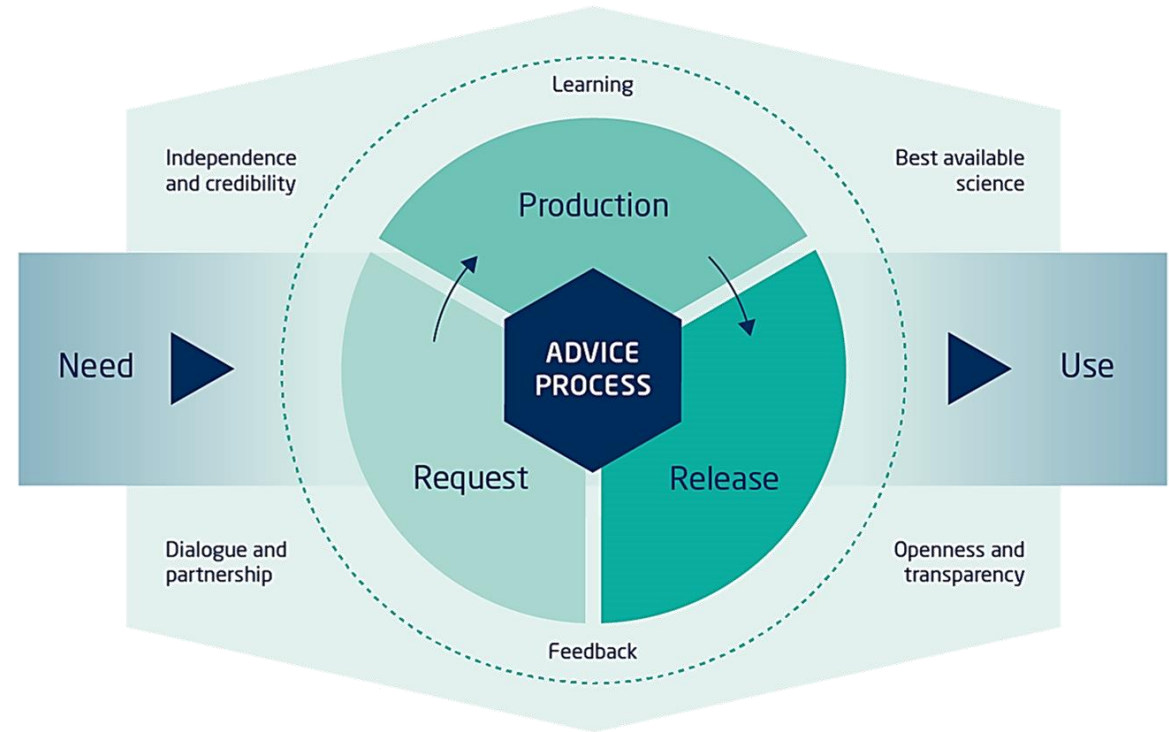
...by employing the knowledge of ICES to effectively meet the societal needs for impartial evidence, and to generate state-of-the-art advice on meeting conservation, management and sustainability goals.



Governed by 10 principles of advice



Advice Process



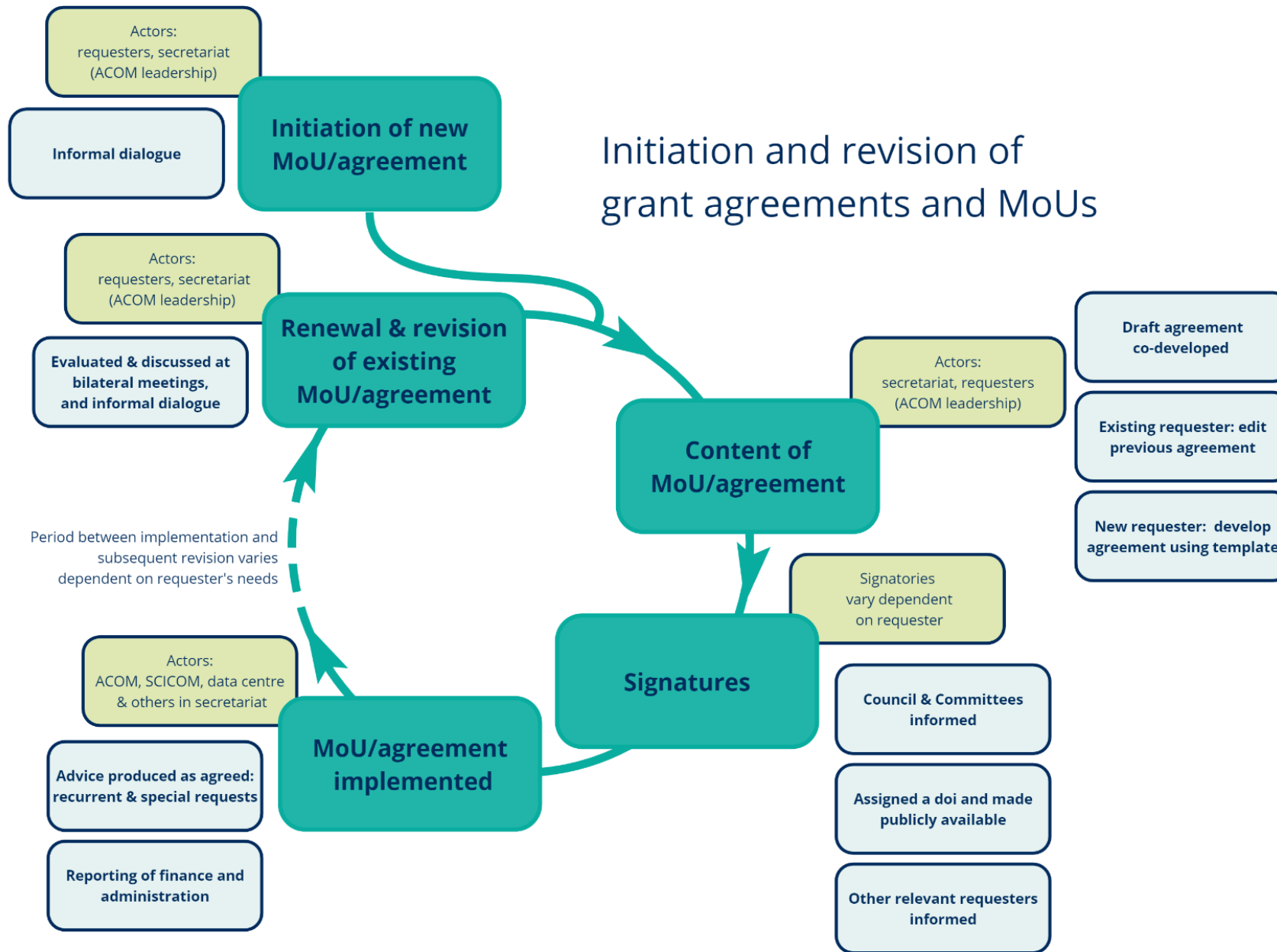
No other fisheries body has
these specifically stated

ICES advice

In response advice to request
from Member countries or
intergovernmental organizations

Recurrent & special requests
only when MOU or agreement
with ICES

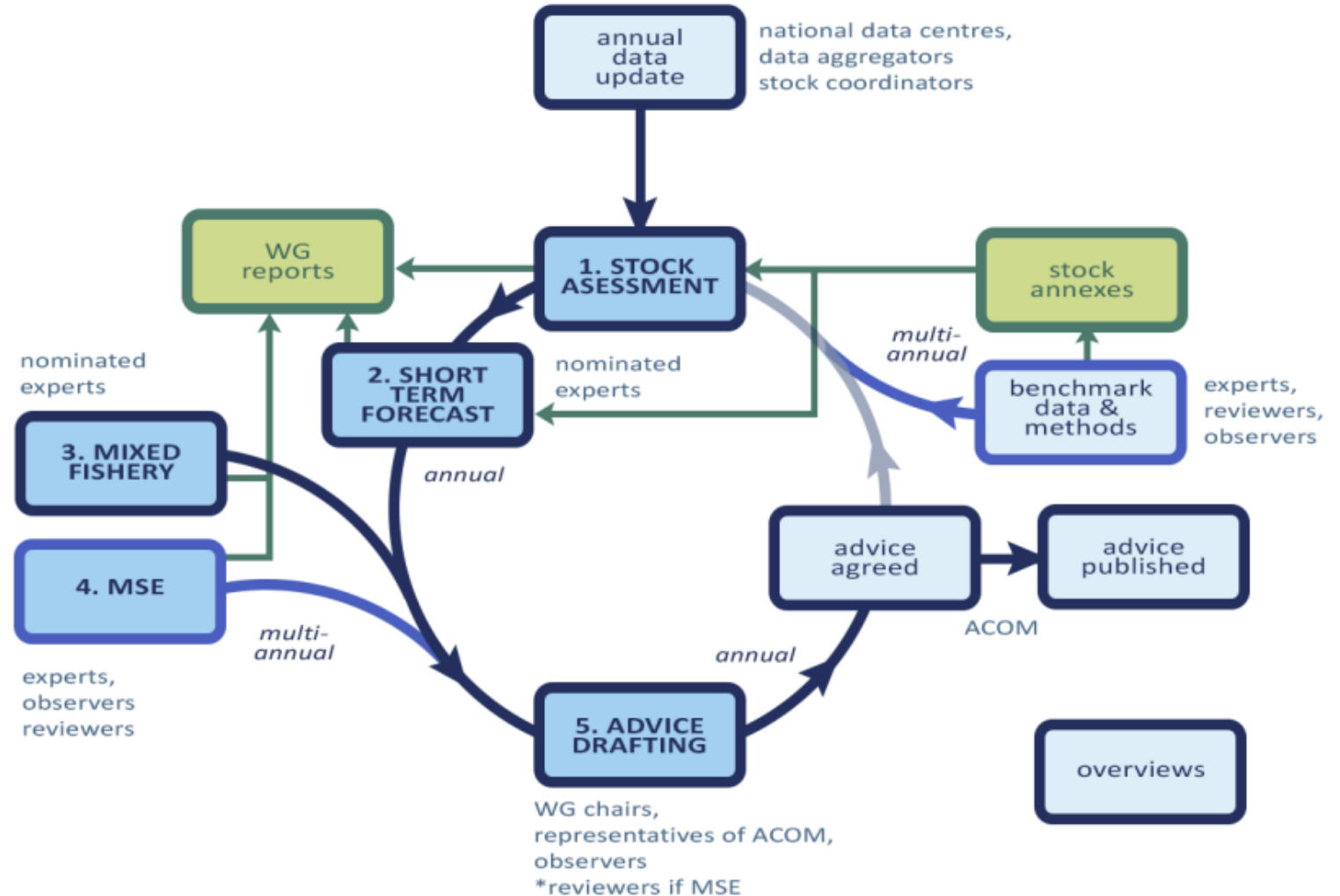




- ICES works with requestors to ensure that advice meets the needs of the requester

Production of advice

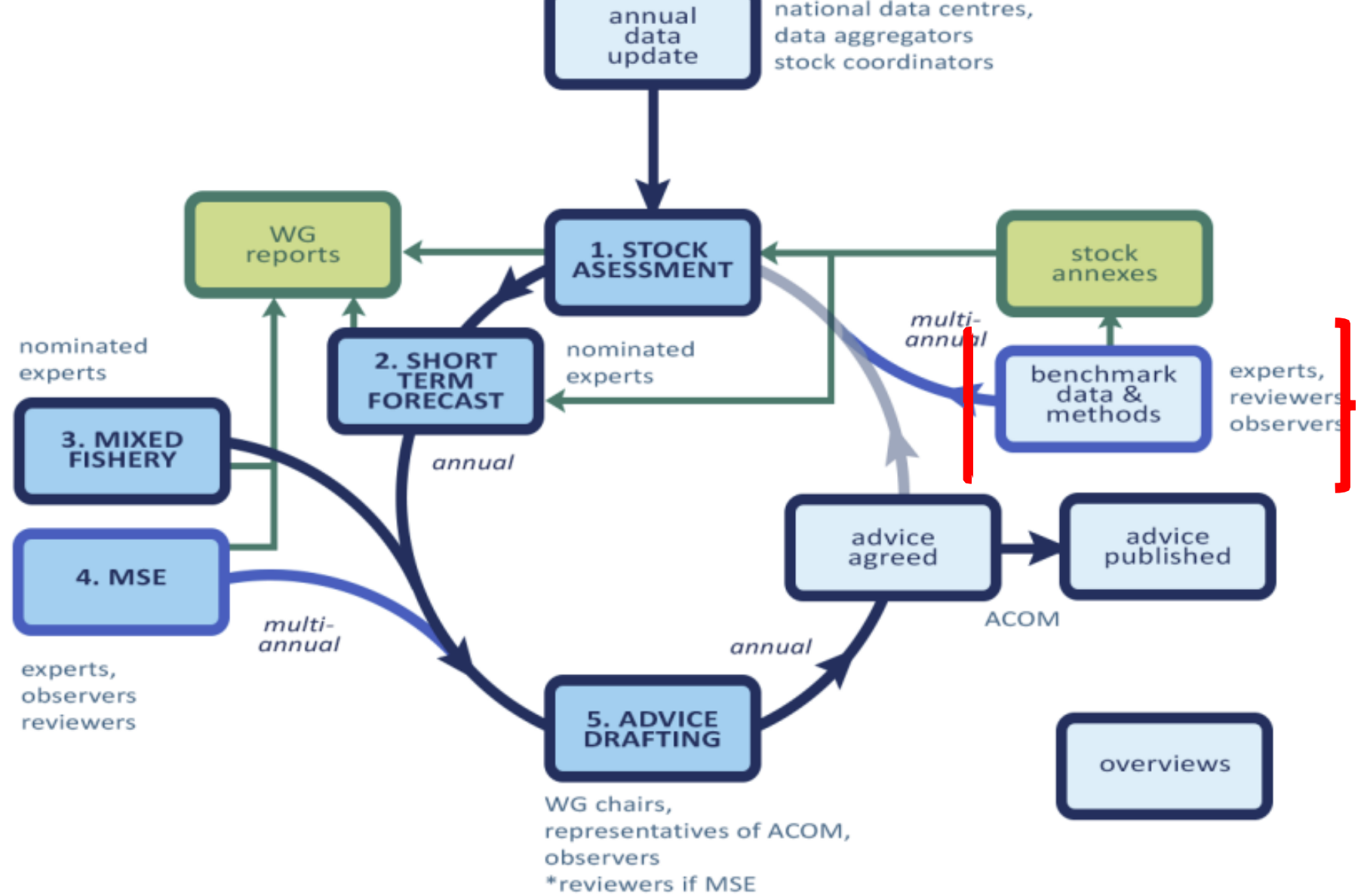
- Includes whole ICES network
- Expert group
 - WGNAS
 - Basis for the advice
 - First draft
- ADG
 - Review and finalize draft
- ACOM
 - Responsible for all advice
 - Reviews and approved
- Secretariat vital to process

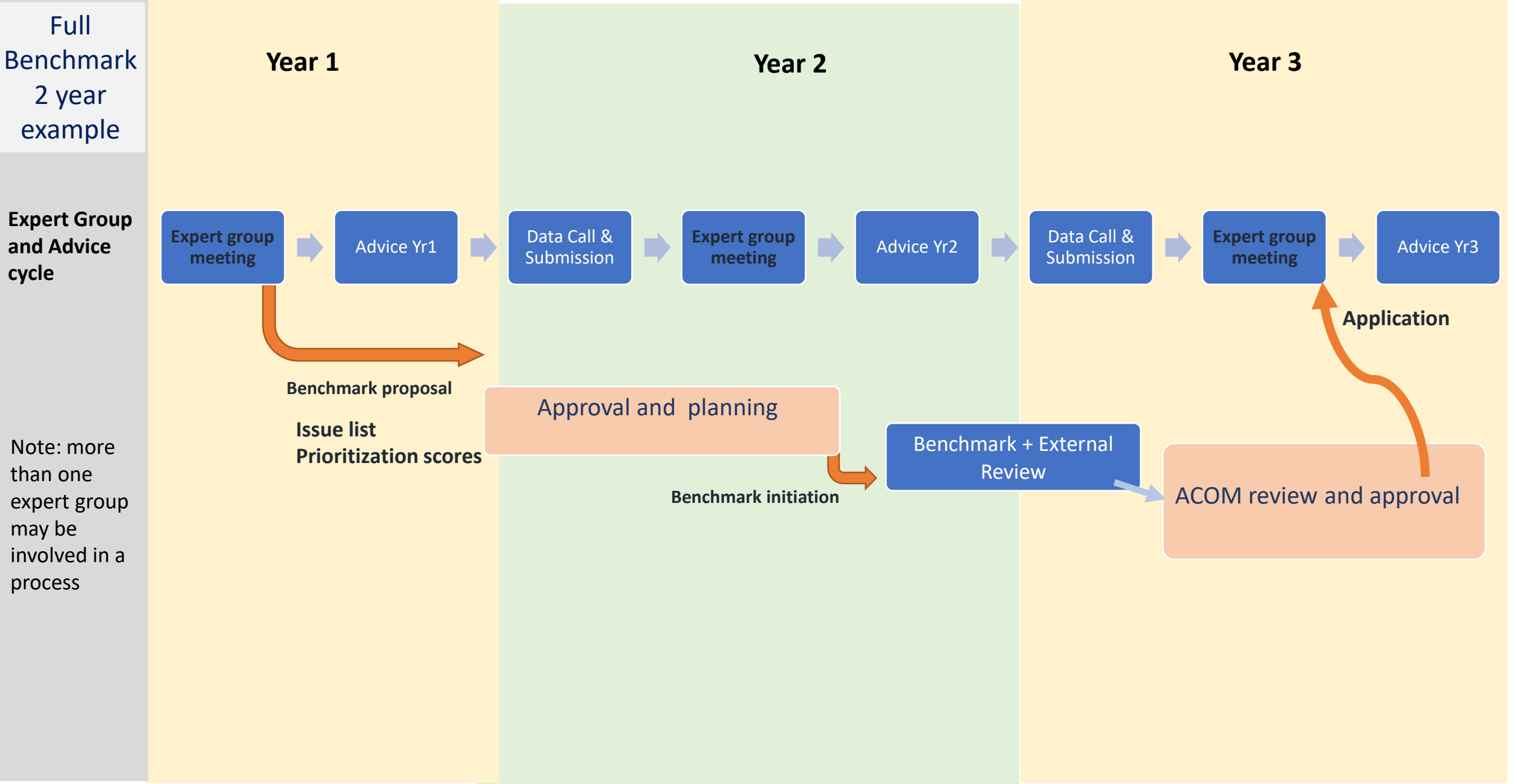


Simplified process for the production of ICES advice on fishing opportunities source: WKAFPA <https://doi.org/10.17895/ices.pub.24866088>

Benchmarks

- WKBSALMON
- Critical to ensure sound basis
 - New science
 - data
 - Methods





Guidelines



- ICES produces guidelines to ensure consistent advice
- Helps ensure quality and clarity
- Guidelines also apply to advice format

Mixed catch of stocks of the same species



- In some cases, ICES advice is for reproductively isolated populations that mix spatially for part of the year and are caught in the same fisheries during that time. Hence, these fisheries impact multiple stocks of the same species at the same time. This is the case for marine fisheries for Atlantic salmon.

Mixed catch of stocks of the same species



- Advice should be consistent with ICES advisory framework
- Advice should be precautionary for all stocks in the fishery; that is, advice for a stock below B_{lim} should be for zero catch where there is no F that will recover the stock to above B_{lim} with $> 50\%$ probability in the year after the year for which the advice applies
- Information on the existence of a concurrent fishery on stocks should be included in the headline advice
- Information on concurrent fisheries should be included in the advised catch levels in the headline advice to the extent possible.

Mixed catch of stocks of the same species



- Advice for NASCO consistent with the new guidelines
 - Consistent with ICES advisory framework
 - Precautionary for all stocks in the fishery
 - All catches are included in the advice and advice addresses the status of stocks in all areas

New advice format



- Subgroup has been formed
 - Gerald Chaput (Canada)
 - Phil McGinnity (Ireland)
 - Michael Millane (Ireland)
 - Etienne Rivot (France)
 - Timothy Sheehan (USA)
 - Alan Walker (WGNAS chair, UK)
 - Jonathan White (FRSG chair and salmon benchmark chair, Ireland)
 - Emma Hatfield (NASCO)
 - Anne Cooper (ICES)

Note that others may attend as required and the process will be assisted by ACOM vice-chair Joanne Morgan.

New advice format



- The subgroup met on 16 February 2024 where they:
- Reviewed the need to strengthen the presentation and alignment of salmon advice.
- Discussed NASCO's desire to communicate their mission and the desire to develop tools to simplify the language used
- Emphasized (1) NASCO's goal of having their questions answered in a manner that is relevant for managers and policy makers, (2) ICES activities and requirements with respect to increased accessibility of data and advice, and (3) called for salmon experts to drive this initiative alongside ICES staff, ACOM Leadership, and with the council of NASCO (as members of the subgroup) to develop salmon advice that is fit for purpose and future-ready.

New advice format



- The subgroup also discussed specific aspects of the task, the first of which was to incorporate advice produced by the new assessment model into the existing advice sheets. This has been accomplished.
- The subgroup also developed a timeline which aims to conclude work by the end of February 2025 for consideration of ACOM (who must approve any format change) in advance of March 2025 ACOM annual meeting