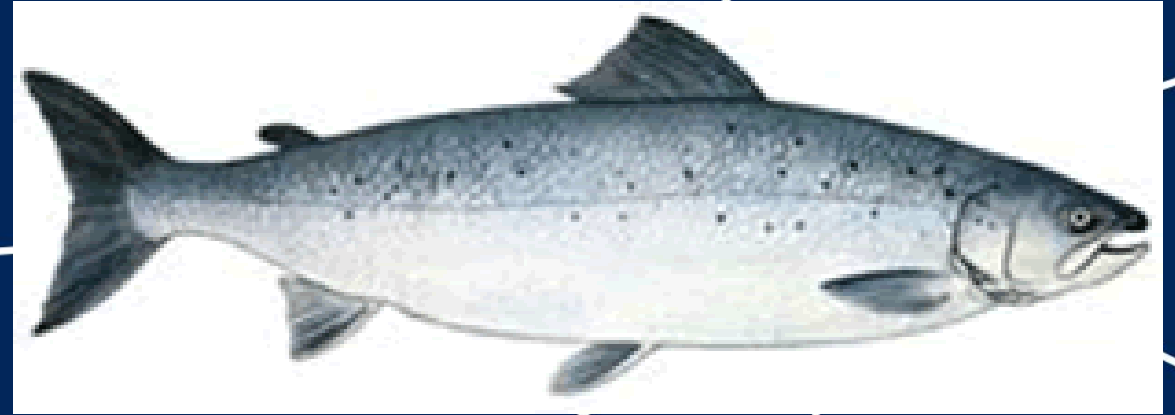


CNL(25)62

Update on the Streamlining of ICES Advice CNL(25)07

NASCO June 2025
Joanne Morgan
ICES ACOM Vice Chair



Science for sustainable seas

Contents



- *Overview of ICES advice and its production*
- *Update on activities of advice format subgroup*
- *Possible overview for the entire North Atlantic*
- *Streamlining the regional advice*

ICES advice

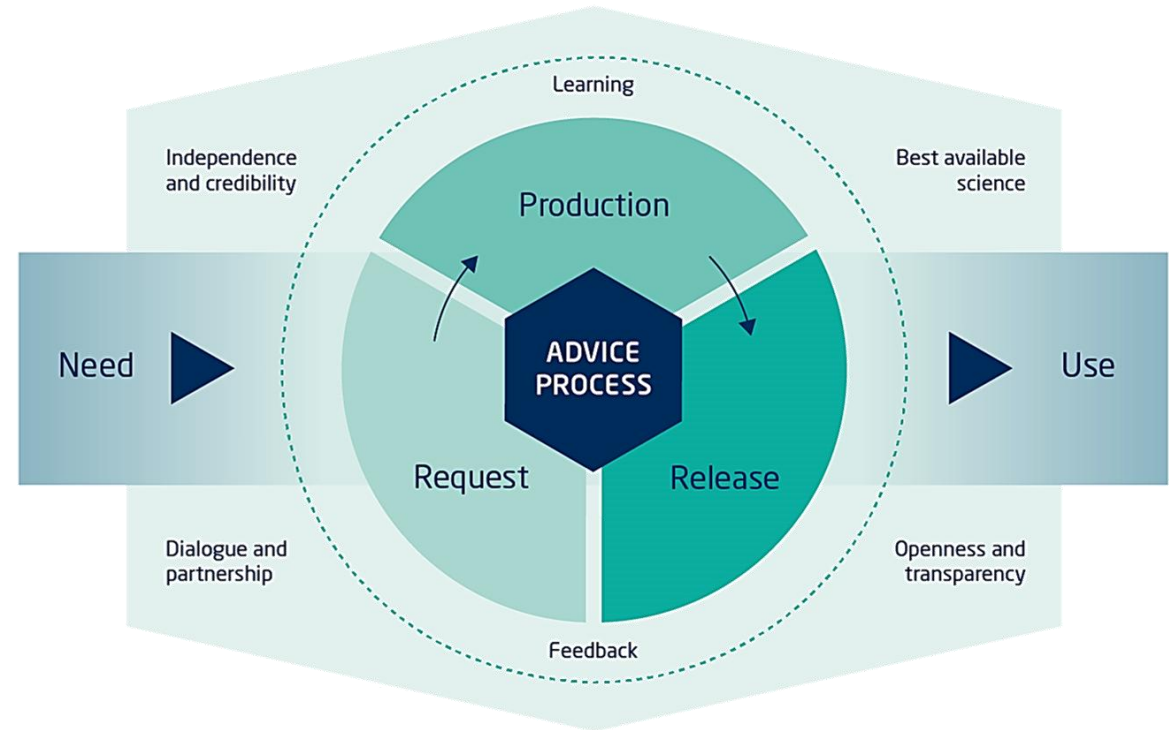
...by employing the knowledge of ICES to effectively meet the societal needs for impartial evidence, and to generate state-of-the-art advice on meeting conservation, management and sustainability goals.



Governed by 10 principles of advice



Advice Process



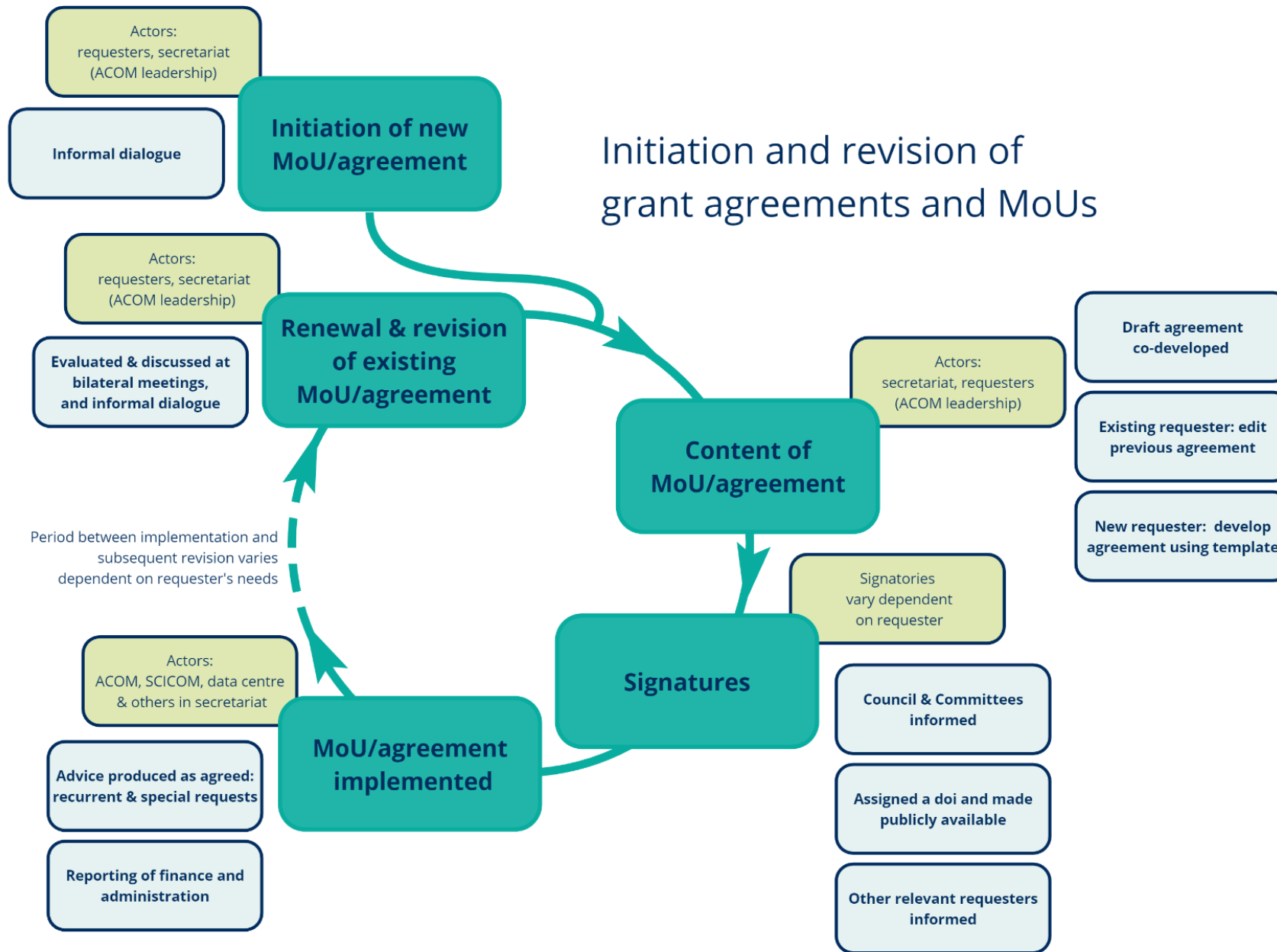
No other fisheries body has
these specifically stated

ICES advice

In response advice to request
from Member countries or
intergovernmental organizations

Recurrent & special requests
only when MOU or agreement
with ICES

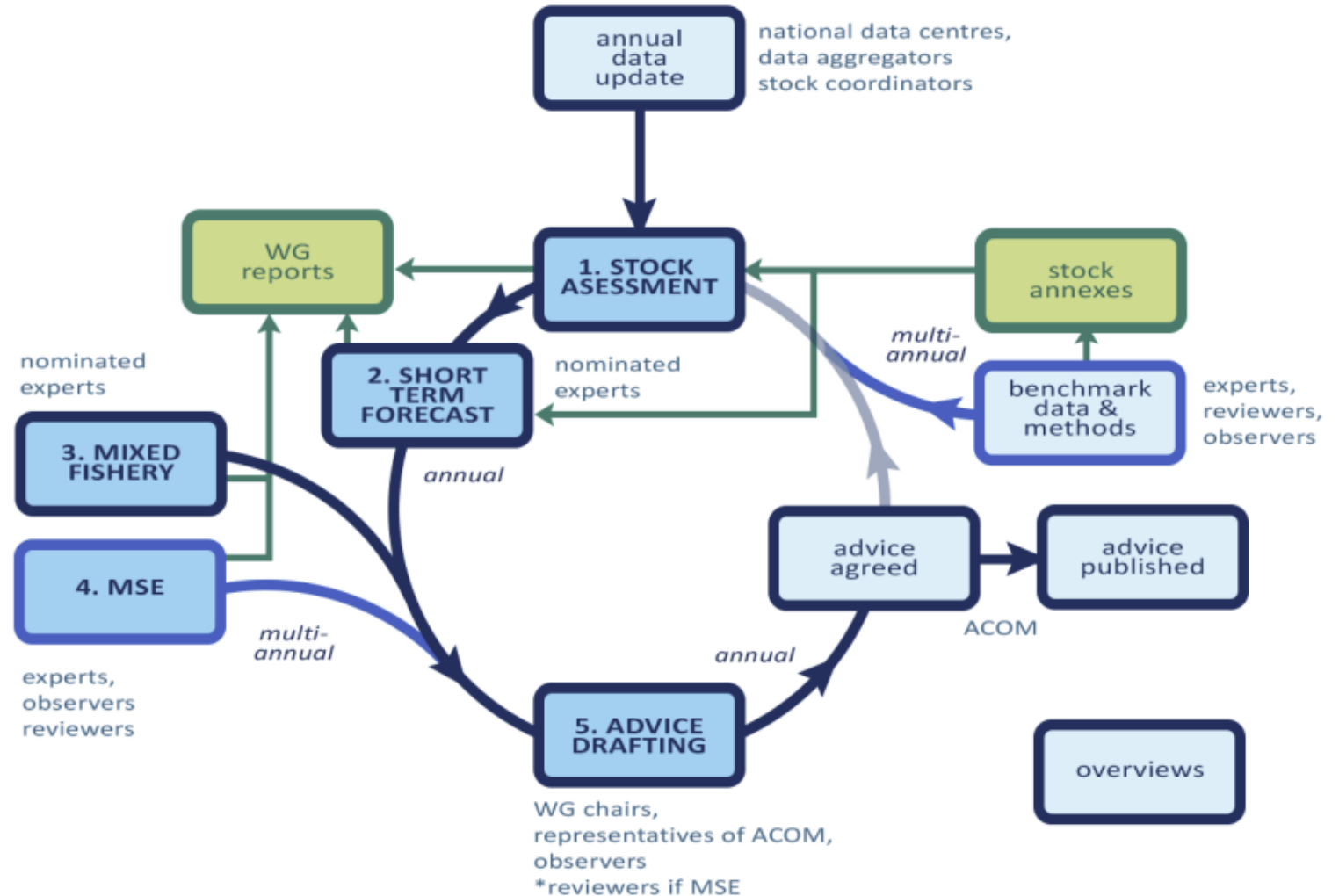




- ICES works with requestors to ensure that advice meets the needs of the requester

Production of advice

- Includes whole ICES network
- Expert group
 - WGNAS
 - Basis for the advice
 - First draft
- ADG
 - Review and finalize draft
- ACOM
 - Responsible for all advice
 - Reviews and approved
- Secretariat vital to process



Simplified process for the production of ICES advice on fishing opportunities source: WKAFPA <https://doi.org/10.17895/ices.pub.24866088>

Subgroup update



- Subgroup convened periodically in 2024 and has had discussions in conference calls and via correspondence on the possible streamlined formats for the four advice sheets presented to NASCO, i.e. for North Atlantic salmon stocks; 'sal.oth.all'; salmon in the North-East Atlantic, 'sal.neac.all'; salmon from North America, 'sal.na.all'; and salmon at West Greenland, 'sal.wgc.all'.
- Partial example developed for sal.neac.all
- Discussions highlighted need for experts to agree on best way to synthesize information and demonstrated gap between the standard ICES approach and the current NA salmon advice

An overview of salmon in the North Atlantic



- Why do this?
 - Allow NASCO to see at a glance the status of salmon in the entire North Atlantic
 - Facilitate NASCO's objective to contribute to the conservation, restoration, enhancement and rational management of salmon stocks in the North Atlantic Ocean
 - Improved communication tools for diverse expert, policy, management and public audiences

An overview of salmon in the North Atlantic



- How
 - Front piece for the sal.oth.all
 - Continue to provide all that is requested for this and other advice sheets
 - Would be similar to ICES standard section on status of the stock (Stock Development Over Time)
 - Synthesizes a large amount of information in a single sentence and on four panel plot

Example from standard sheets



Sole (*Solea solea*) in Division 7.a (Irish Sea)

ICES advice on fishing opportunities

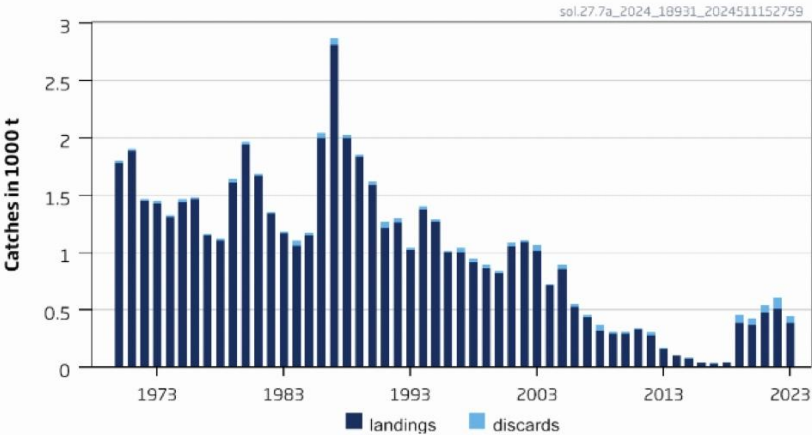
ICES advises that when the MSY approach is applied, catches in 2025 should be no more than 609 tonnes.

Example from standard sheets

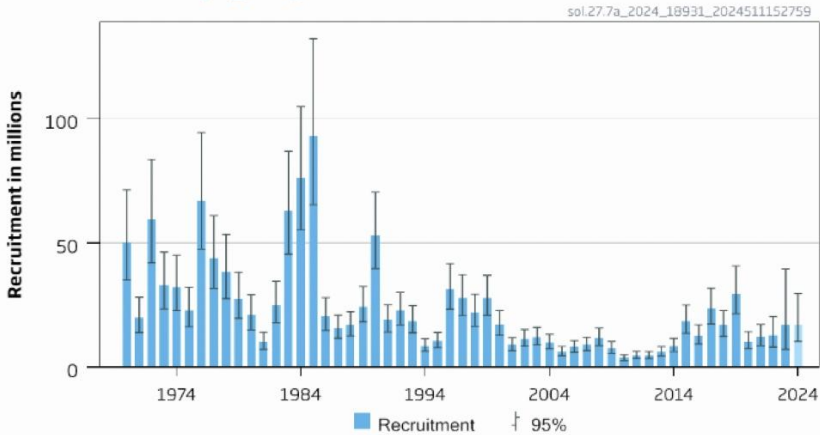
Stock development over time

Fishing pressure on the stock is below F_{MSY} ; spawning-stock size is above $MSY B_{trigger}$, B_{pa} , and B_{lim} .

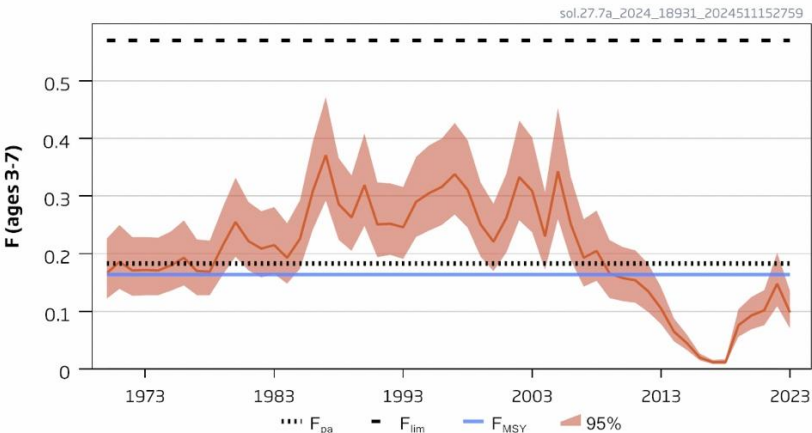
Catches



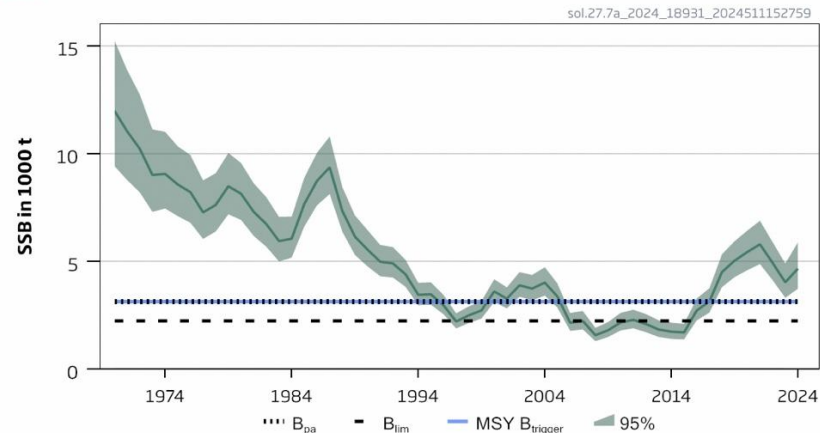
Recruitment (age 1)



F

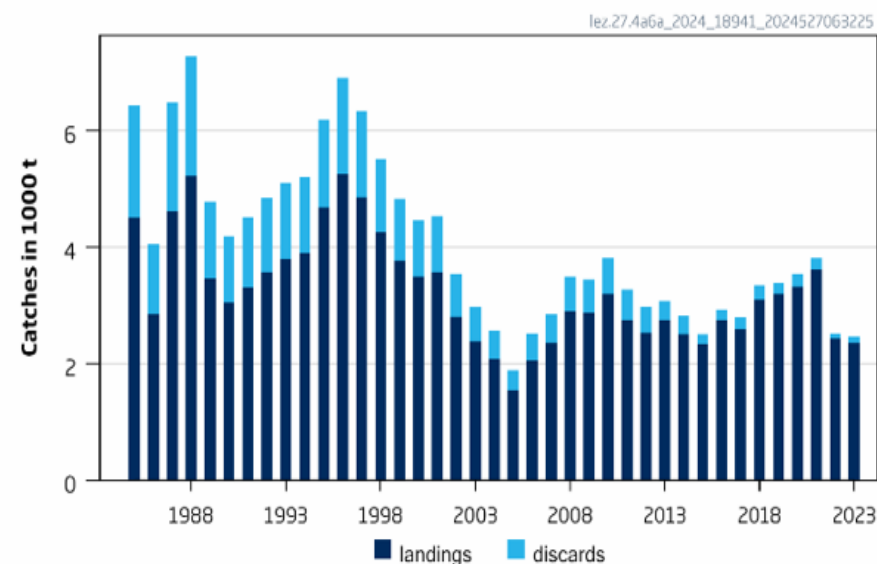


SSB



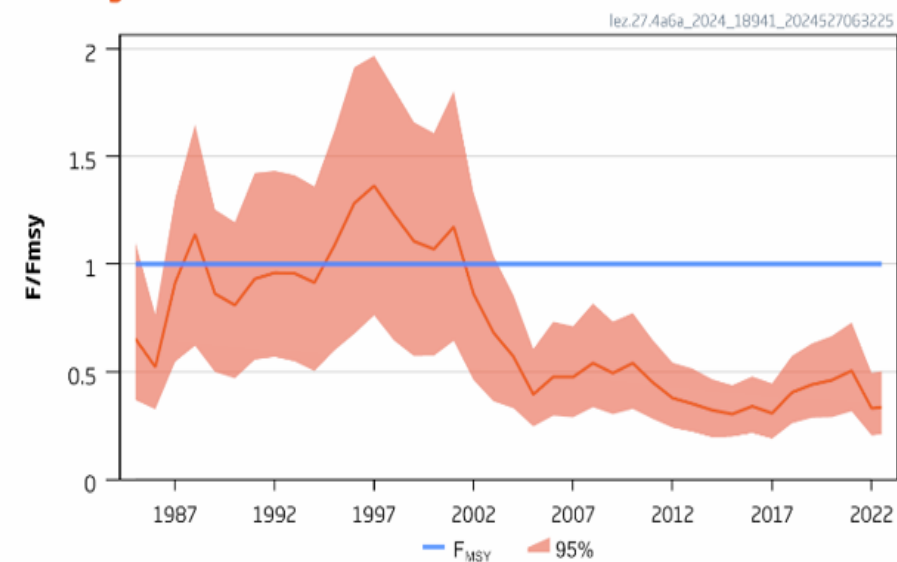
Example from standard sheets

Catches

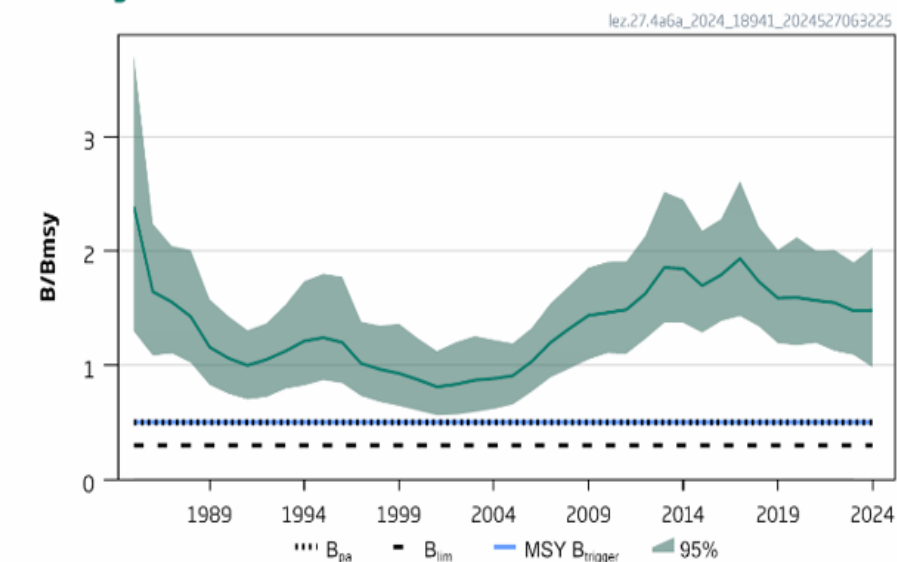


Production model

F/F_{msy}



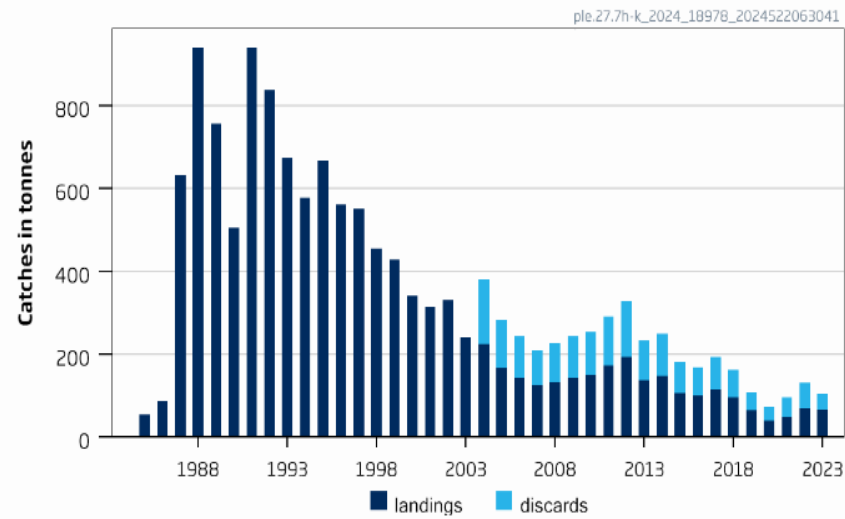
B/B_{msy}



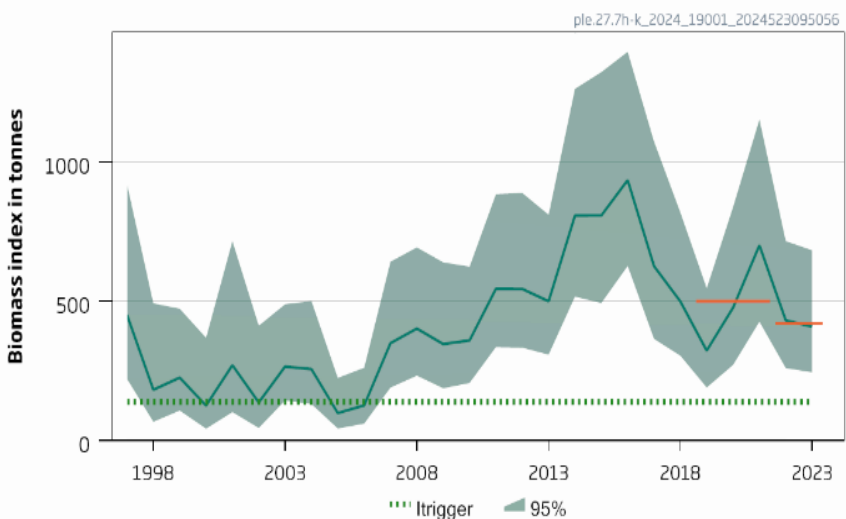
Example from standard sheets



Catches

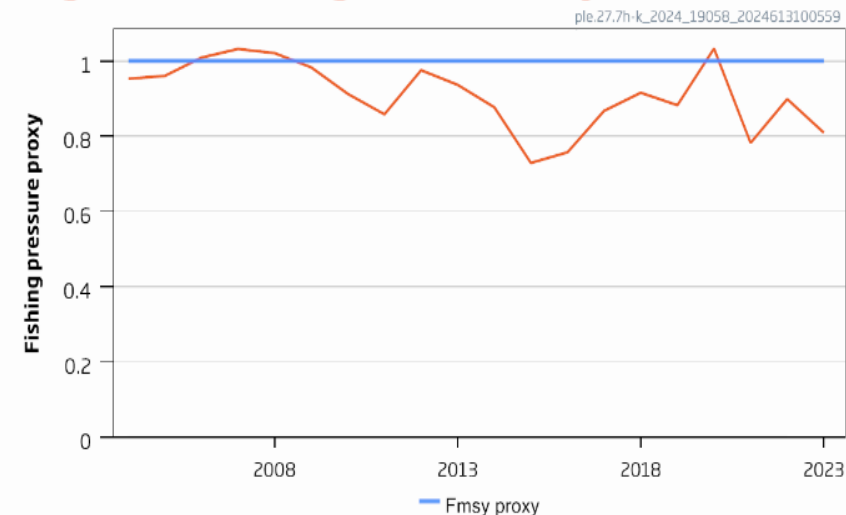


Biomass Index



Data limited

Length-based Fishing Pressure Proxy

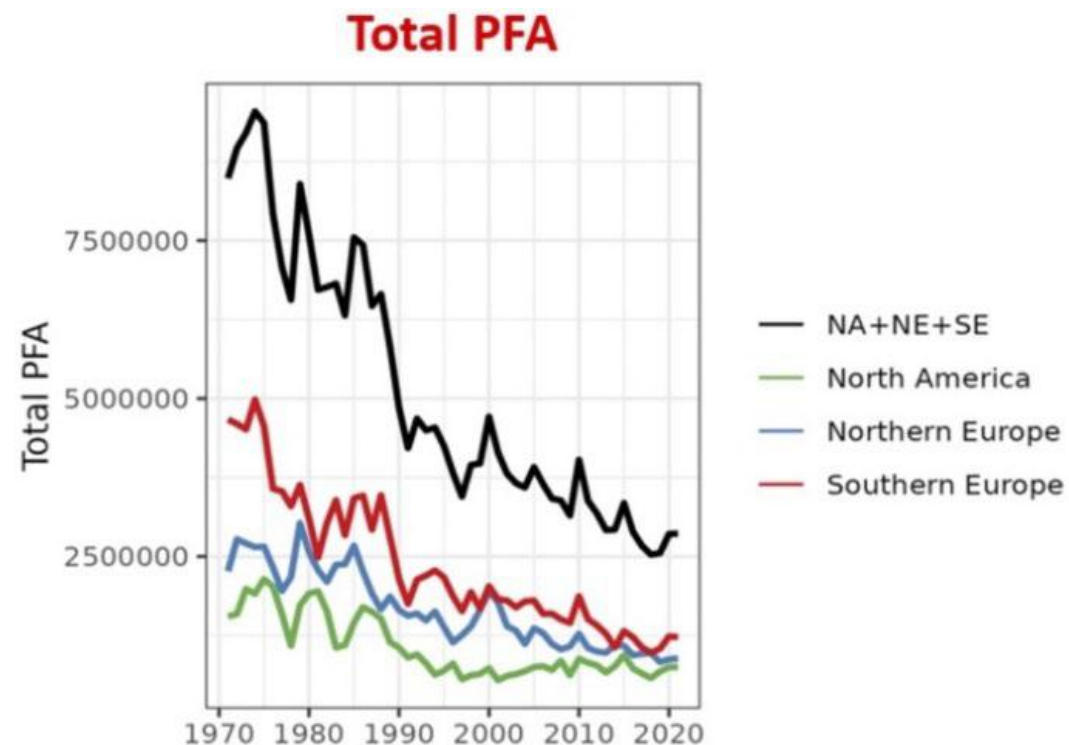
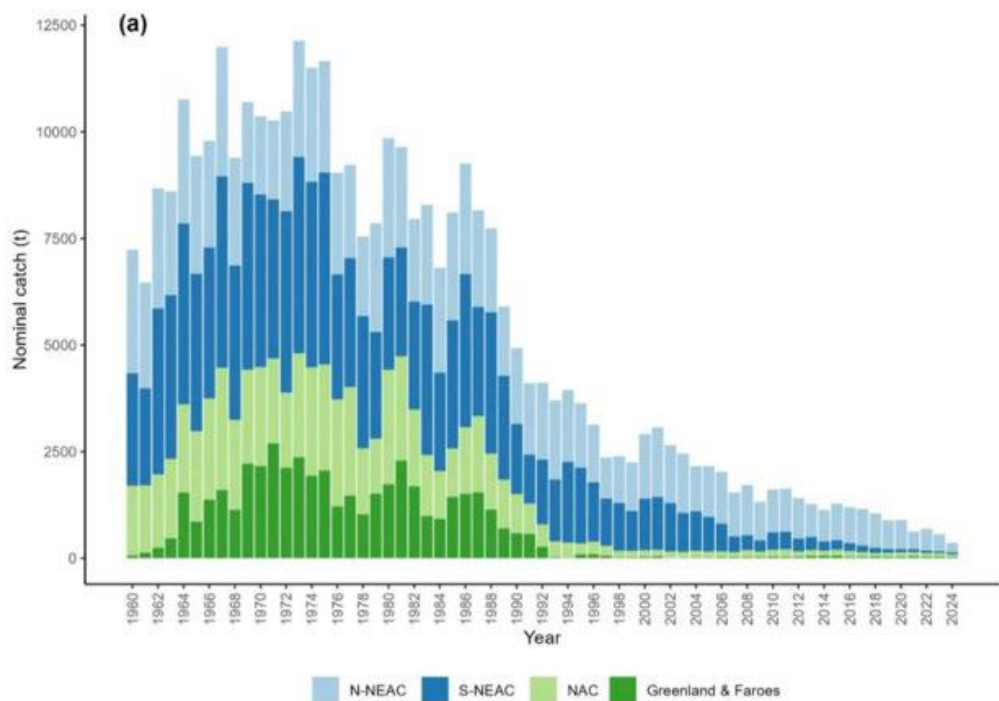


An overview of salmon in the North Atlantic



- Whole Atlantic
 - LCM model allows this
 - ‘The model works at the scale of the 25 stock-units, but results can be aggregated at any scale.’
 - ‘One can also calculate the probability of achieving MO at the scale of any stock grouping’

An overview of salmon in the North Atlantic



An overview of salmon in the North Atlantic



- Decisions on what are the appropriate metrics to represent stock status would need to be made by WGNAS
 - What is the most appropriate measure of abundance?
 - Is there an appropriate measure of recruitment?
 - Is there an appropriate measure of exploitation rate?
 - Can any of the existing management objectives be summed to the whole area?
 - These decisions may help in streamlining regional advice

Streamlining the regional advice sheets



- Making the decisions on how to present stock status for the whole Atlantic may aid in the decision making for the regional advice sheets (one of the stumbling blocks so far) and help move the process forward

Streamlining the regional advice sheets



- Why do we want to do this
 - NASCO has asked us to do this in 2022
 - More focussed and easier to extract relevant detail
 - Easier to produce and to understand
 - Standardized format and language aids in quality assurance

Streamlining the regional advice sheets



- Standard format can accommodate what NASCO needs –e.g.
 - Stock development over time gives quick overview of status
 - Issues relevant for the advice section describes any changes in the fishery or management that are relevant – not repeating from year to year what has not changed
- Can be tailored to specific needs of NASCO
- If necessary relevant aspects can be added
 - For example the proportion of rivers attaining their conservation limits could be accommodated perhaps in issues relevant for the advice

Streamlining the regional advice sheets



- Aim for revised format before the 2026 advice