

Streamlining ICES advice

CNL(25)63

Two key proposals



Requesting ICES produce a North Atlantic overview for salmon



Simplifying fisheries advice for each Commission area (using standard ICES format)

Purpose of the North Atlantic overview

To give anyone a quick understanding of the state of Atlantic salmon as a species, and identify key human impacts

The person on the street might ask:

- How many salmon are there?
- How many salmon should there be?
- What explains the difference between what we have (1) and what we should have (2)? What is the level of our impacts?

Then extra questions they might ask:

- What do we predict for the future?
- Are there particular regions that are better or worse than others?

The overview - what should it include?

It **doesn't** need to provide fishing advice (unlike the Commission Area advice), so no need to follow the standard Fishing Opportunities or Catch Advice 'model'

Target audience – all stakeholders. Key info: a summary of stocks, their status, and high-level description of the fisheries

Adult Abundance: 1SW and MSW salmon time-series of returns and spawners (in-river), compared against Conservation Limits (CLs). Plus adults at sea to estimate total abundance.

Recruitment: pre-fishery abundance time-series for 1SW and MSW salmon

Catches: Annual time-series catches for 1SW and MSW salmon from all fisheries.

Acronyms:

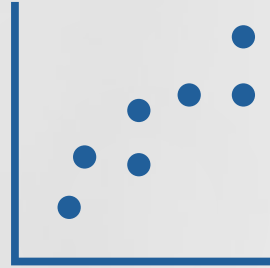
1SW = Adults that come back from sea after 1 winter

MSW = Adults that stay away for 2 or more winters

Commission Areas: Simplified fisheries advice

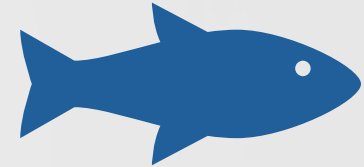


Adopt the standard
ICES advice format



The proposed headings:

1. ICES advice on fishing opportunities
2. Non-fisheries conservation considerations
3. Stock development over time and a four-panel plot



→ ICES/WGNAS test the format in 2026
→ NASCO Parties review at 2026 Annual Meeting
→ ICES/NASCO agree final format for use in 2027

Example advice and status of the stock sections

Sole (*Solea solea*) in Division 7.a (Irish Sea)

ICES advice on fishing opportunities

ICES advises that when the MSY approach is applied, catches in 2025 should be no more than 609 tonnes.

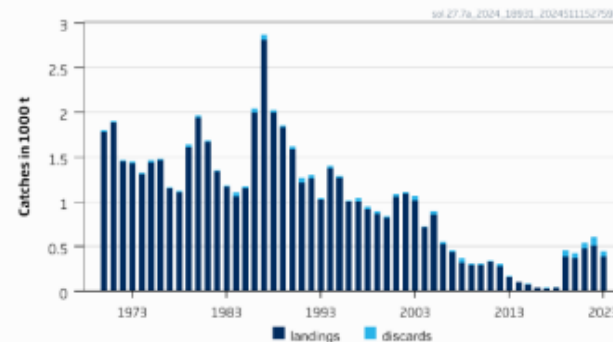
Non-fisheries conservation considerations

Conservation aspects and associated management measures may exist at a national or regional level but were not reviewed by ICES.

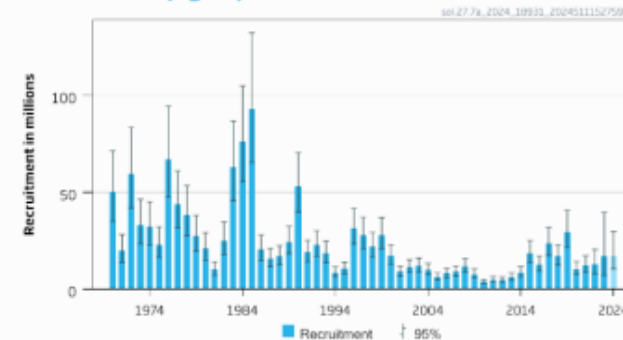
Stock development over time

Fishing pressure on the stock is below F_{MSY} ; spawning-stock size is above MSY $B_{trigger}$, B_{pa} , and B_{lim} .

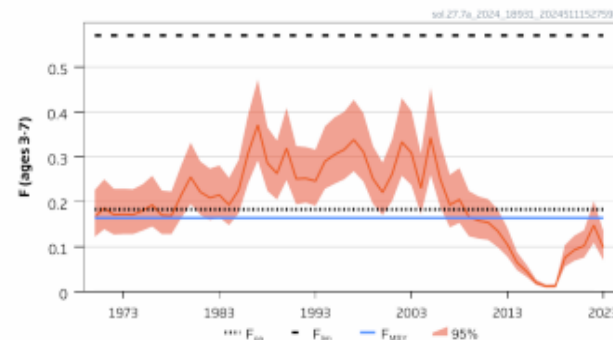
Catches



Recruitment (age 1)



F



SSB

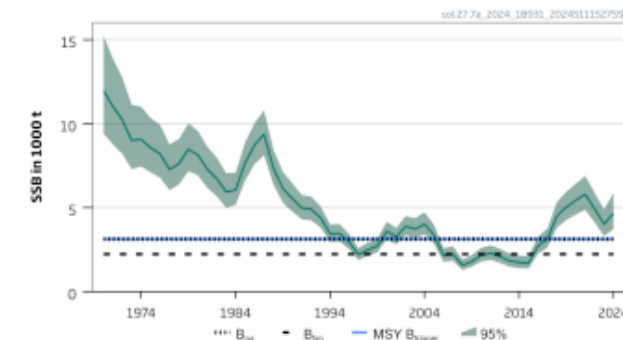



Figure 1


Sole in Division 7.a. Summary of the stock assessment. The assumed recruitment value for 2024 is shaded in a lighter colour.

Quick wins

Describing any relevant changes in the fishery or management, without repeating text annually on things that haven't changed



Removing any data that does not enable the NASCO questions to be answered



Time-series information (tables) should be reported once and distributed to other datasets to ensure there is only one version of the data, as an online repository