



WGCIS(26)09

# The Salmon fishery in Greenland

West Greenland Commission Inter sessional





# Program

- Today and tomorrow my and my colleagues will describe the salmon fishing in Greenland
  - The legislations
  - The equipment
  - The importance of salmon and self sufficiency
  - How control is conducted
  - The implementation of the regulatory measure
  - 2025 fishing season
  - The salmon report for 2021-2025
  - Coastal fisheries in general
  - Kapisillit river salmon
  - And many other things



## Description of the fishery

- Subsistence fishery
- Coastal waters
- Within 3 nautical miles of the baseline
- Dinghies or small coastal vessels (under 42 feet).
- Professional and recreational fishers can fish
- No export





# Equipment used for fishing

- Fishing rod
- Nets
  - Maximum 2.000 knots
  - 30 meters long
  - Mesh size must be at least 140 mm long





## 2025 Reported fishing gear

- 716 reported using nets.
- 5 reported using rod.
- 391 did not report which equipment that was used
- Nets are by far the preferred equipment.



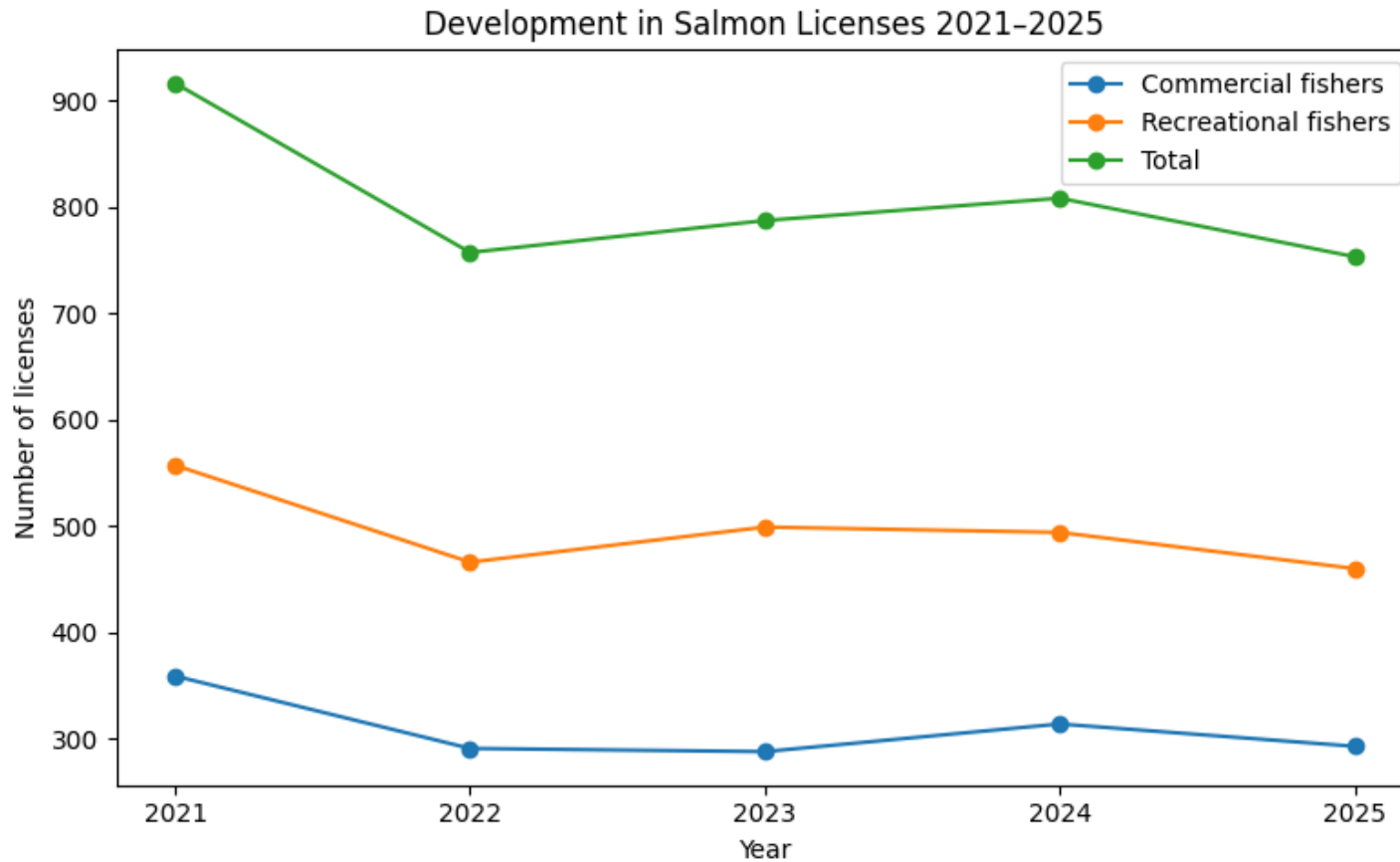


# No trawlers!



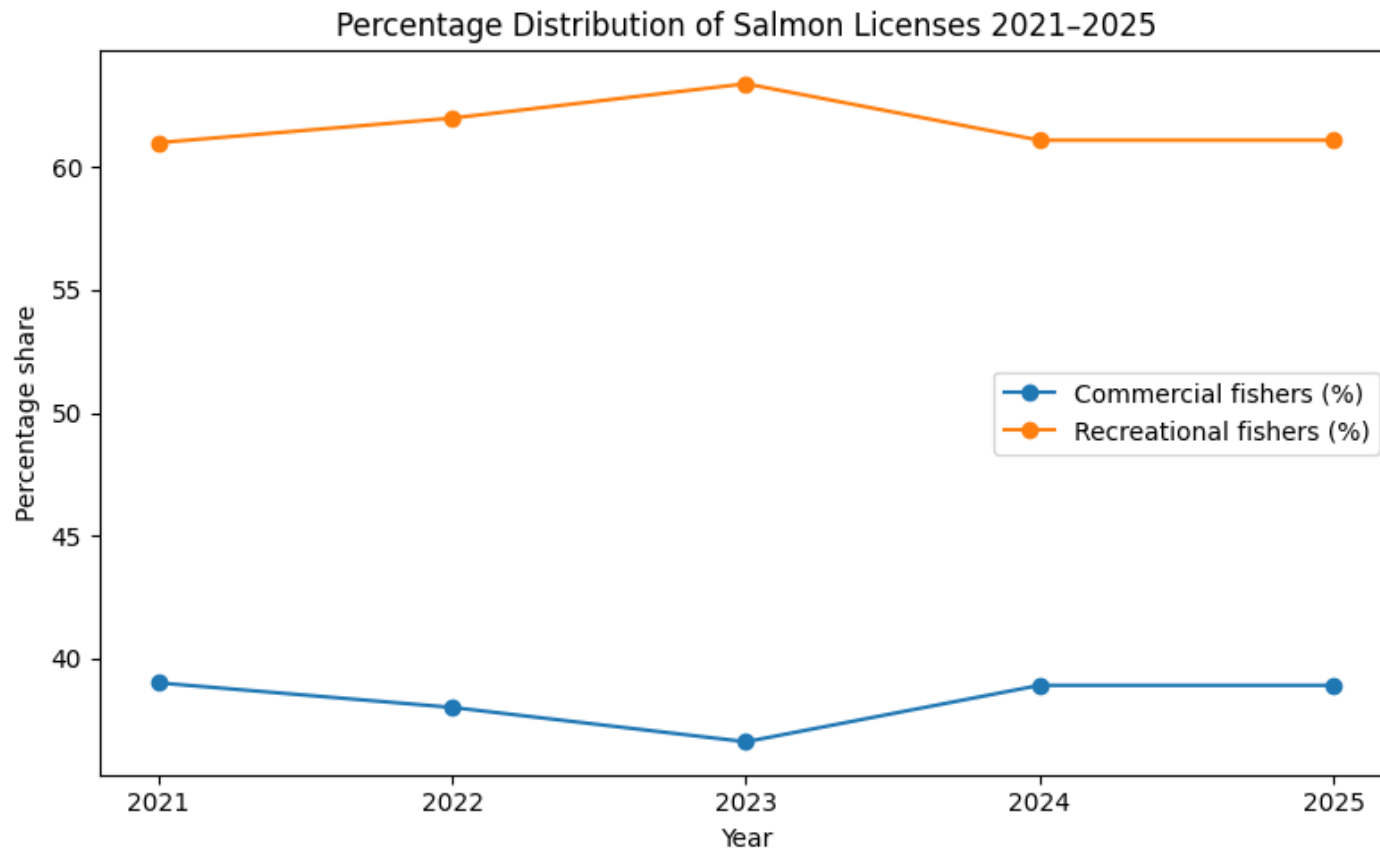


# Commercial vs recreational





# Percentage share





# The Fisheries Act

## **§ 1: Greenland's fish resources are owned by the Greenlandic society.**

The purpose of this Act is to ensure that society receives the greatest possible long-term economic benefit from fishing[...]

### **§1 (3): In administering this Act, emphasis shall also be placed on:**

- 1) the balance between fishing capacity and fishing opportunities and the efficient use of capacity;
- 3) scientific advice;
- 4) local and social aspects;
- 5) bilateral and international agreements and conventions;
- 6) minimizing the impact of fishing;
- 7) **consideration of the population's need for self-sufficiency**
- 8) stakeholder involvement, and
- 9) transparency in the management and exercise of fisheries.

**§ 6. Persons registered in the Greenland civil registry may engage in non-commercial fishing within Greenland's fishing territory without prior authorization, cf. § 7.**



# Executive Order

- **§ 3.** Non-commercial salmon fishing may only be carried out by persons in possession of a valid license for salmon fishing, which is issued by Naalakkersuisut upon application.
- **§ 3 (2).** For applicants who held a license in the previous salmon fishing season, the acquisition of a new license is conditional upon the applicant having fulfilled their reporting obligations in the previous season in accordance with §§ 7 and 8.
- **§ 7.** Any person engaged in non-commercial salmon fishing must report all catches of salmon to the Greenland Fisheries and Hunting Control, cf. subsection 2.
- **§ 7 (2).** Catch reporting must be made using Annex 1 or via Sullissivik.gl. Reporting must be carried out immediately upon returning home after tending gear or upon completion of the fishing activity.
- **§ 8.** Any person holding a license for non-commercial salmon fishing who has not engaged in the fishery or has not caught any salmon must report this to the Greenland Fisheries and Hunting Control using Annex 1 or via Sullissivik.gl no later than 14 days after the closure of the salmon fishing season.



# Executive Order

- § 10. Fishers holding a license for commercial salmon fishing must report all salmon catches to Greenland Fisheries and Hunting Control immediately upon arrival in port. The report must include all salmon caught. Reporting must be carried out using Annex 1 or via Sullissivik.gl. The reporting obligation also applies to salmon taken as bycatch in connection with other commercial fisheries.
- § 11. Any person holding a license for commercial salmon fishing who has not engaged in the fishery or has not caught any salmon must report this to Greenland Fisheries and Hunting Control using Annex 1 or via Sullissivik.gl no later than 14 days after the closure of the salmon fishing season.



## Protective measures of Kapisillit river

- **§ 36.** It is prohibited to fish with any type of net within 1,000 meters of the mouth of the Kapisillit River.
- **§ 36 (2).** It is prohibited to fish with any type of gear, except a fishing rod with a single hook, within 50 meters of the mouth of the Kapisillit River.
- **§ 36 (3).** Only fishing rods with a single hook may be used in the Kapisillit River itself and the lakes connected to it.



## The only regulated fishery requiring a license

- Salmon is the only fish species in Greenland that requires an individual fishing license.
- It is also the only species with a mandatory catch reporting requirement.
- No other non-commercial fish has the same level of regulation.
- This makes salmon management unique compared to all other fisheries in Greenland.



# The importance of salmon

- We are a people whose daily lives are deeply intertwined with nature.
- This relationship shapes our culture, our practices, and the way we provide for our families.
- More than any other party, we rely directly on the land and the sea for our livelihood.
- Each summer, we harvest and prepare for the long winter ahead
  - fish, shellfish, marine mammals, and terrestrial mammals.
- Salmon is a vital and traditional source of food.
- Self sufficiency is especially important in the isolated small settlements, as in some areas, supply ships come arrive twice or maybe three times year.
- Ensuring continued access to these resources allows our isolated communities to sustain themselves, as they always have.



# The Greenland context



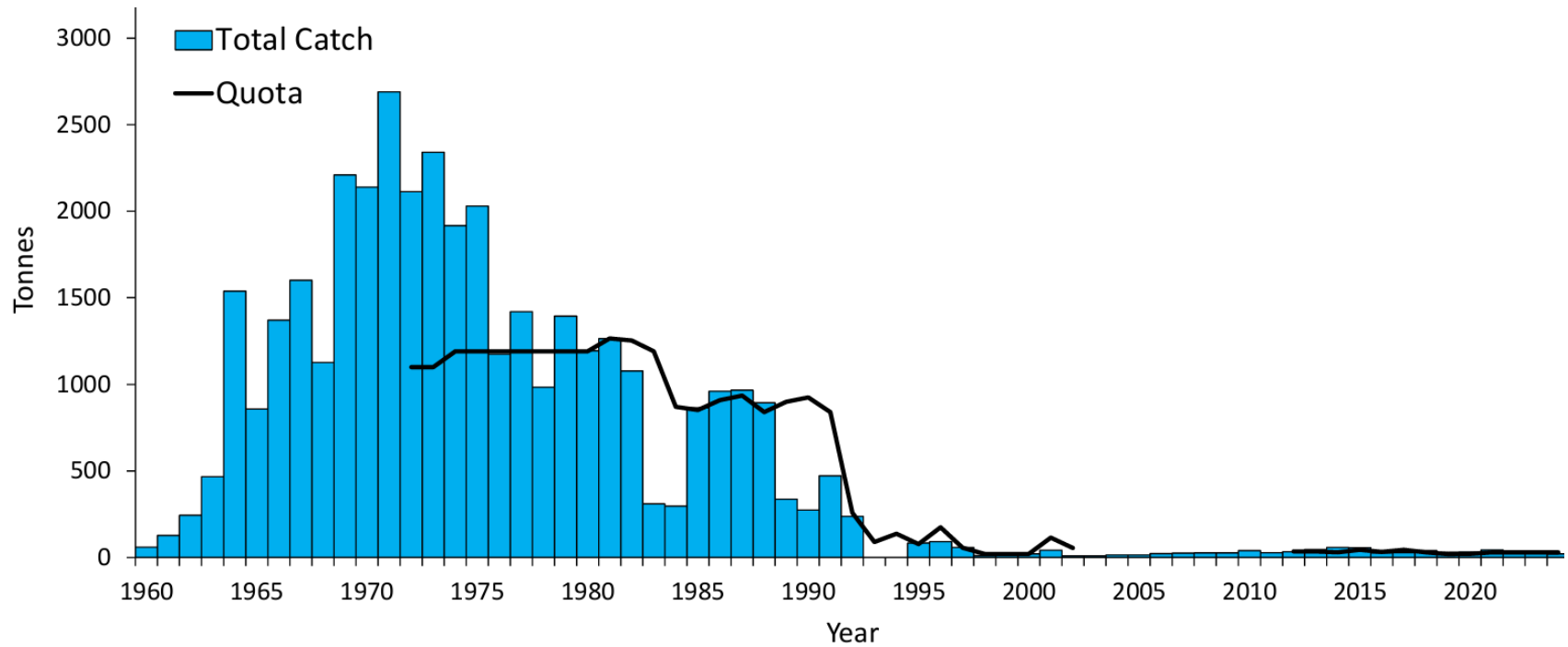


# Greenland vs EU





# Quota development





# The Fisheries division — national portfolio



- 14 employees:
- Management of the fisheries
  - Drafting legislation and management plans
  - MSC certifications
- In collaboration with Fisheries Council, scientist and industry
- TAC and allocation of quotas
- Managing fisheries
  - Issuance of licenses and permits
  - Cooperation with municipalities on issuance of coast licenses
- Establishment and evaluation of experimental fisheries
- Development and maintenance of LULI – fisheries database
- Functions as secretariat for the Fisheries Council
- Subsidiary support for fisheries and hunters:
  - Support for dinghies
  - Support for vessels
- Servicing the Minister and Naalakkersuisut
  - Proposals and reports
  - Press conferences, speeches, meetings and official visits



## Regional Fisheries Management Organizations and cooperation fora



### North East Atlantic Fisheries Commission

- Denmark in respect of the Faroe Islands and Greenland
- Management and control in international waters
- Ratifying coastal state arrangements



### Nordic Council of Ministers – Fisheries, aquaculture, agriculture, food and forestry (MR-FJLS)

- EK og AG Fish (project working groups)
- Executive Committee (on behalf of permanent secretary)
- Minister meetings with Ministers



### Northwest Atlantic Fisheries Organisation

- Denmark in respect of the Faroe Islands and Greenland
- Management and control in international waters
- Scientific advice



### Joint Icelandic – Greenlandic Fisheries Commission

- Annual meetings on collaboration in RFMOs, shared stocks and arrangements, scientific and control cooperation and access to each others' waters
- Protocol with fixed agenda



### North Atlantic Salmon Conservation Organisation

- Denmark in respect of the Faroe Islands and Greenland
- West Greenland Commission regulatory measure for the Greenland salmon fishery



### UK – Greenland Fisheries Dialogue

- Annual meetings on collaboration in RFMOs, shared stocks, science and control, knowledge sharing and sharing of experiences and projects
- Based on MoU with UK – identifying areas of cooperation



# Management plans

**§ 16:** The Government shall adopt multi-annual management plans for all significant stocks and fisheries in Greenlandic waters.

- Management plans ensure a stable and transparent framework for managing a stock or fisheries
- Including regulation for setting the TAC, fishing season, management areas etc.
- Developed in close collaboration with stakeholders
- Strong management tool

## Management plans:

- ✓ Cod, offshore East Greenland
- ✓ Greenland halibut, offshore East
- ✓ Greenland halibut, offshore West
- ✓ Prawns, West
- ✓ Lumpfish, West
- ✓ Snowcrabs, West
- ✓ Salmon

## Management plans under development:

- Cod, offshore + inshore, East and West
- Redfish, offshore, East
- Greenland halibut inshore, West + East

## Management plans to be developed:

- Prawns, East
- Scallops, West
- Redfish, offshore, West
- Salmon, Kapisilit



- Now GFJK will make a presentation about how control is conducted

